

# Vascular Plants of Ortega Hill Bioregion, Ventura County, California

By David L. Magney

Scientific Name	Common Name	Habit	Wetland Indicator		Family	Abundance Status
			Status	Family		
<i>Acer macrophyllum</i> Pursh var. <i>macrophyllum</i>	Bigleaf Maple	T	FAC		Sapindaceae	O
<i>Acmispon argophyllus</i> (A. Gray) Brouillet var. <i>argophyllus</i>	Silver Deervetch, Silky Lotus	PH	.		Fabaceae	S
<i>Acmispon brachycarpus</i> (Bentham) D.D. Sokoloff	Hill Lotus, Short-podded Hosackia	AH	.		Fabaceae	O
<i>Acmispon glaber</i> (Vogel) Brouillet var. <i>glaber</i>	Deerweed, California Broom	PH	.		Fabaceae	C
<i>Acmispon nevadensis</i> var. <i> davidsonii</i> (E. Greene) Brouillet	Suphur-flowered Hosackia	PH	.		Fabaceae	S
<i>Adenostoma fasciculatum</i> Hook. & Arn. var. <i>fasciculatum</i>	Chamise	S	.		Rosaceae	C
<i>Agoseris retrorsa</i> (Bentham) E. Greene	Spear-leaved Mountain Dandelion	PH	.		Asteraceae	C
<i>Allium diabloese</i> (Traub) D. McNeal	Diablo Onion	PG	.		Alliaceae	S
<i>Allophyllum gilioides</i> ssp. <i>violaceum</i> (A.A. Heller) Day	Violet Phlox	AH	FAC		Polemoniaceae	S
<i>Allophyllum glutinosum</i> (Bentham) A.D. Grant & V. Grant	Sticky Allophyllum	AH	.		Polemoniaceae	O
<i>Alnus rhombifolia</i> Nuttall	White Alder	T	FACW		Betulaceae	C
<i>Amelanchier utahensis</i> Koehne	Utah Serviceberry	S	FACU		Rosaceae	U
<i>Amorpha californica</i> Nuttall var. <i>californica</i>	California False Indigo	S	FAC		Fabaceae	C
<i>Apocynum cannabinum</i> L.	Indian Hemp	PH	FAC		Apocynaceae	S
<i>Aralia californica</i> S. Watson	Elk Clover, Spikenard	S	FACW		Araliaceae	R
<i>Arctostaphylos glandulosa</i> ssp. <i>cushingiana</i> (Eastw.) Keeley, Vasey & Parker	Cushing's Eastwood Manzanita	S	.		Ericaceae	S
<i>Arctostaphylos glandulosa</i> Eastw. ssp. <i>glandulosa</i>	Eastwood Manzanita	S	.		Ericaceae	C
<i>Arctostaphylos glandulosa</i> ssp. <i>mollis</i> (J.E. Jones) P. Wells	Santa Ynez Mountains Manzanita	S	.		Ericaceae	C
<i>Arctostaphylos glauca</i> Lindley	Bigberry Manzanita	S	.		Ericaceae	C
<i>Artemisia douglasiana</i> Besser	Mugwort	PH	FAC		Asteraceae	C
<i>Artemisia dracuncululus</i> L.	Tarragon, Dragon Tarragon	PH	(FACW)		Asteraceae	C
<i>Artemisia tridentata</i> Nuttall ssp. <i>tridentata</i>	Great Basin Sagebrush	S	.		Asteraceae	C
<i>Asclepias californica</i> E. Greene ssp. <i>californica</i>	California Milkweed	AH	.		Apocynaceae	C
<i>Astragalus lentiginosus</i> var. <i>frémontii</i> (A.Gray) S. Watson	Fremont Spotted Locoweed	PH	UPL		Fabaceae	U
* <i>Avena barbata</i> Link. *	Slender Wild Oat	AG	.		Poaceae	C
<i>Balsamorhiza deltoidea</i> Nuttall	Balsamroot, Chuchupate	PH	.		Asteraceae	C
<i>Barbarea orthoceras</i> Ledeb.	American Wintercress	BH	FACW		Brassicaceae	O
* <i>Barbarea verna</i> (Mill.) Asch. *	Early Wintercress	AH	?		Brassicaceae	R
<i>Bloomeria crocea</i> (Torrey) Cov. ssp. <i>crocea</i>	Goldenstars	PG	.		Themidaceae	C
<i>Bloomeria crocea</i> var. <i>montana</i> (E. Greene) Ingram	Mountain Goldenstars	PG	.		Themidaceae	O
<i>Boechera arcuata</i> (Nutt.) Windham & Al-Shehbaz	Few-flowered Rock Cress	PH	.		Brassicaceae	C
<i>Boechera sparsiflora</i> (Nutt.) Dorn	Few-flowered Rock Cress	PH	.		Brassicaceae	C
<i>Brickellia californica</i> (T. & G.) Gray	California Brickellbush	S	FACU		Asteraceae	C
* <i>Bromus diandrus</i> Roth. ssp. <i>diandrus</i> *	Ripgut Grass	AG	(FACU)		Poaceae	C
<i>Bromus grandis</i> (Shear) A. Hitchc.	Tall or Grand Brome	PG	.		Poaceae	S
* <i>Bromus hordeaceus</i> L. ssp. <i>hordeaceus</i> *	Soft Chess	AG	FACU		Poaceae	C
* <i>Bromus rubens</i> L. *	Red Brome	AG	UPL		Poaceae	C
<i>Bromus sitchensis</i> var. <i>carinatus</i> (Hook. & Arn.) R.E. Brainerd & Otting	California Brome	PG	.		Poaceae	C
* <i>Bromus tectorum</i> L. *	Downy Brome, Cheat Grass	AG	.		Poaceae	C

This checklist may be reproduced for educational or scientific purposes only, with full credit given to the author.

# Vascular Plants of Ortega Hill Bioregion, Ventura County, California

By David L. Magney

Scientific Name	Common Name	Habit	Wetland Indicator		Family	Abundance Status
			Status	Family		
<i>Calochortus fimbriatus</i> H.P. McDonald	Late-flowering Mariposa Lily	PG	.		Liliaceae	S, 1B.2
<i>Calochortus venustus</i> Benth.	Butterfly Mariposa Lily	PG	.		Liliaceae	C
<i>Calyptridium monandrum</i> Nuttall	Common Calyptridium, Sand Cress	AH	.		Montiaceae	C
<i>Calystegia malacophylla</i> ssp. <i>pedicellata</i> (Jepson) Munz	Sierra Morning-glory	PV	.		Convolvulaceae	C
<i>Camissonia strigulosa</i> (Fischer & C. Meyer) Raven	Strigose Primrose	AH	.		Onagraceae	O
<i>Camissoniopsis hirtella</i> (E. Greene) W.L. Wagner & Hoch	Small-haired Primrose	AH	.		Onagraceae	O
<i>Camissoniopsis ignota</i> (Jepson) W.L. Wagner & Hoch	Small Primrose	AH	.		Onagraceae	U
<i>Cardamine pachystigma</i> (S. Watson) Rollins var. <i>pachystigma</i>	Toothwort	PH	FAC		Brassicaceae	R
<i>Carex praegracilis</i> W. Boott	Clustered Field Sedge	PG	FACW		Cyperaceae	O
<i>Carex senta</i> Boott	Rough Sedge	PG	OBL		Cyperaceae	O
<i>Castilleja applegatei</i> ssp. <i>pinetorum</i> (Fern.) Chuang & Heckard	Wavyleaf Indian Paintbrush	PH	.		Orobanchaceae	U
<i>Castilleja subinclusa</i> E. Greene ssp. <i>subinclusa</i>	Long-leaved or Jepson Indian Paintbrush	PH	.		Orobanchaceae	C
<i>Ceanothus crassifolius</i> Torrey var. <i>crassifolius</i>	Snowball, Hoaryleaf Ceanothus	S	.		Rhamnaceae	C
<i>Ceanothus crassifolius</i> var. <i>planus</i> Abrams	Flatleaf Snowball	S	.		Rhamnaceae	C
<i>Ceanothus leucodermis</i> E. Greene	Chaparral Whitethorn	S	.		Rhamnaceae	C
<i>Ceanothus palmeri</i> Trel.	Palmer Ceanothus	S	.		Rhamnaceae	O
<i>Cercocarpus betuloides</i> Torrey & A. Gray var. <i>betuloides</i>	Birchleaf Mountain Mahogany	S	.		Rosaceae	C
<i>Chaenactis santolinoides</i> E. Greene	Perennial Pincushion	PH	.		Asteraceae	C
<i>Chenopodium fremontii</i> S. Watson	Fremont Goosefoot	AH	FACU		Chenopodiaceae	U
<i>Cirsium occidentale</i> var. <i>venustum</i> (E. Greene) Jepson	Red or Venus Thistle	BH	.		Asteraceae	O
* <i>Cirsium vulgare</i> (Savi) Tenore *	Common or Bull Thistle	BH	FACU		Asteraceae	S
<i>Clarkia bottae</i> (Spach) Lewis & Lewis	Punchbowl Godetia	AH	.		Onagraceae	C
<i>Clarkia heterandra</i> (Torrey) H. Lewis & Raven	California Gaura	AH	.		Onagraceae	U
<i>Clarkia purpurea</i> ssp. <i>quadrivulnera</i> (Douglas) H. Lewis & M. Lewis	Four-spotted Purple Clarkia	AH	.		Onagraceae	C
<i>Clarkia rhomboidea</i> Douglas	Rhomboid Clarkia	AH	.		Onagraceae	U
<i>Claytonia rubra</i> (J.T. Howell) Tidestrom ssp. <i>rubra</i>	Red Miner's Lettuce	AH	.		Montiaceae	U
<i>Clematis ligusticifolia</i> Nuttall	Virgin's Bower, Old Man's Beard	PV	FAC		Ranunculaceae	C
<i>Collinsia callosa</i> Parish	Large-fruited Blue-eyed Mary	AH	.		Plantaginaceae	S
<i>Collinsia childii</i> A. Gray	Child Blue-eyed Mary	AH	.		Plantaginaceae	U
<i>Collomia grandiflora</i> Lindley	Large-flowered Collomia	AH	.		Polemoniaceae	S
<i>Cordylanthus rigidus</i> (Benth.) Jepson ssp. <i>rigidus</i>	Rigid Bird's Beak	AH	.		Orobanchaceae	C
<i>Corethrogyne filaginifolia</i> (Hook. & Arn.) Nutt. var. <i>filaginifolia</i>	California Cudweed-aster	PH	.		Asteraceae	C
<i>Crocanthemum scoparium</i> (Nutt.) Millsp. var. <i>scoparium</i>	Peak Rushrose	S	.		Cistaceae	U
<i>Cryptantha affinis</i> (A. Gray) E. Greene	Side-groved Forget-Me-Not	AH	.		Boraginaceae	R
<i>Cryptantha clevelandii</i> E. Greene var. <i>clevelandii</i>	Cleveland Forget-Me-Not	AH	.		Boraginaceae	C
<i>Cryptantha echinella</i> E. Greene	Prickly Forget-Me-Not	AH	.		Boraginaceae	S
<i>Cryptantha muricata</i> (Hooker & Arnott) Nelson & Macbr. var. <i>muricata</i>	Showy Prickly Forget-Me-Not	AH	.		Boraginaceae	O
<i>Cryptantha nemaclada</i> E. Greene	Colusa Forget-Me-Not	AH	.		Boraginaceae	S
<i>Cryptantha simulans</i> E. Greene	Pine Forget-Me-Not	AH	.		Boraginaceae	S

This checklist may be reproduced for educational or scientific purposes only, with full credit given to the author.

# Vascular Plants of Ortega Hill Bioregion, Ventura County, California

By David L. Magney

Scientific Name	Common Name	Habit	Wetland Indicator		Family	Abundance Status
			Status	Family		
<i>Cryptantha torreyana</i> var. <i>pumila</i> (A. Heller) I.M. Johnst.	Dwarf Forget-Me-Not	AH	.		Boraginaceae	R
<i>Cryptantha torreyana</i> (A. Gray) E. Greene var. <i>torreyana</i>	Torrey Forget-Me-Knot	AH	.		Boraginaceae	U
<i>Datisca glomerata</i> (C. Presl) Baillon	Durango Root	PH	FACW		Datisceae	C
<i>Delphinium parishii</i> ssp. <i>pallidum</i> (Munz) M.J. Warnock	Pale-flowered Larkspur	PH	.		Ranunculaceae	C
<i>Delphinium parishii</i> A. Gray ssp. <i>parishii</i>	Parish's Larkspur	PH	.		Ranunculaceae	S
<i>Delphinium parryi</i> ssp. <i>purpureum</i> (F. Lewis & Epling) M.J. Warnock	Mount Pinos Larkspur	PH	.		Ranunculaceae	C, 4,3
<i>Diplacus brevipes</i> (Bentham) Nesom	Short or Wide-throat Monkeyflower	AH	.		Phrymaceae	C
<i>Diplacus calycinus</i> Eastw.	Fuzzy Bush Monkeyflower	S	.		Phrymaceae	C
<i>Diplacus constrictus</i> (A.L. Grant) Nesom	Narrow-throated Monkeyflower	AH	.		Phrymaceae	O
<i>Diplacus johnstonii</i> (A.L. Grant) Nesom	Johnston Monkeyflower	AH	.		Phrymaceae	S
<i>Diplacus longiflorus</i> (Nuttall) A. Grant var. <i>longiflorus</i>	Sticky Bush Monkeyflower	S	FACU		Phrymaceae	C
<i>Dipterostemon capitatus</i> (Bentham) Rydb. ssp. <i>capitatus</i>	Blue Dicks	PG	FACU		Themidaceae	C
<i>Drymocallis glandulosa</i> var. <i>wrangelliana</i> (Fisch. & Avé-Lall.) Ertter	Wrangell's Cinquifol	PH	FAC		Rosaceae	U
<i>Elymus glaucus</i> Buckl. ssp. <i>glaucus</i>	Blue or Woodland Wildrye	PG	FACU		Poaceae	C
<i>Elymus multisetus</i> (J.G. Smith) Burt Davy	Bottlebrush Squirreltail	PG	.		Poaceae	S
<i>Elymus triticoides</i> Buckl. ssp. <i>triticoides</i>	Creeping Wildrye	PG	FAC		Poaceae	C
<i>Ephedra viridis</i> Coville	Green Ephedra or Mormon-tea	S	.		Ephedraceae	C
<i>Epilobium ciliatum</i> Raf. ssp. <i>ciliatum</i>	Northern Willow-herb	AH	FACW		Onagraceae	C
<i>Epilobium ciliatum</i> ssp. <i>glandulosum</i> (Lehm.) P. Hoch & Raven	Sticky Northern Willow-herb	AH	FACW		Onagraceae	R
<i>Equisetum laevigatum</i> A. Braun	Smooth Scouring-Rush	PF	FACW		Equisetaceae	O
<i>Eriastrum signatum</i> D. Gowen	Moroon-spotted Woolly Star	AH	.		Polemoniaceae	C
<i>Ericameria nauseosa</i> var. <i>mohavensis</i> (Greene) G.L. Nesom & G.I. Baird	Mojave Rubber Rabbitbrush	S	.		Asteraceae	C
<i>Erigeron foliosus</i> Nuttall var. <i>foliosus</i>	Leafy Fleabane or Daisy	PH	.		Asteraceae	C
<i>Eriodictyon crassifolium</i> var. <i>nigrescens</i> Brand	Thickleaf Yerba Santa	S	.		Namaceae	C
<i>Eriogonum cithariforme</i> S. Watson var. <i>cithariforme</i>	Cithara Buckwheat	AH	.		Polygonaceae	C
<i>Eriogonum fasciculatum</i> var. <i>polifolium</i> (A. DC.) Torrey & A. Gray	Hoary California Buckwheat	S	.		Polygonaceae	C
<i>Eriogonum hirtiflorum</i> S. Watson	Hairy-flowered Buckwheat	AH	.		Polygonaceae	U
* <i>Erodium cicutarium</i> (L.) L'Her. *	Redstem Filaree	AH	.		Geraniaceae	C
<i>Erysimum capitatum</i> (Dougl.) E. Greene var. <i>capitatum</i>	Western Wallflower	AH/BH	.		Brassicaceae	C
<i>Erythranthe guttata</i> (Fischer ex DC.) Nesom [ <i>Mimulus guttatus</i> DC.]	Common Streamside Monkeyflower	A/PH	OBL		Phrymaceae	C
<i>Eschscholzia caespitosa</i> Bentham ssp. <i>caespitosa</i>	Tufted Poppy	BH	.		Papaveraceae	O
<i>Eschscholzia californica</i> Chamisso in C.G.D. ssp. <i>californica</i>	California Poppy	AH	.		Papaveraceae	C
<i>Euphorbia spathulata</i> Lam.	Warty or Spoonleaf Spurge	AH	FAC		Euphorbiaceae	U
<i>Frangula californica</i> (Eschsch.) A. Gray ssp. <i>californica</i>	California Coffeeberry	S	.		Rhamnaceae	O
<i>Frangula californica</i> ssp. <i>tomentella</i> (Benth.) Kartesz & Gandhi	Hoary Coffeeberry	S	.		Rhamnaceae	C
<i>Galium andrewsii</i> A. Gray ssp. <i>andrewsii</i>	Pine Mat, Phlox-leaved Bedstraw	PH	.		Rubiaceae	C
<i>Galium angustifolium</i> Nuttall ssp. <i>angustifolium</i>	Chaparral or Narrow-leaved Bedstraw	S	.		Rubiaceae	C
<i>Galium hallii</i> Munz & I.M. Johnston	Nodding Bedstraw	PH	.		Rubiaceae	C
<i>Garrya flavescens</i> S. Watson ssp. <i>flavescens</i>	Silk-tassel Bush	S	.		Garryaceae	O

This checklist may be reproduced for educational or scientific purposes only, with full credit given to the author.

# Vascular Plants of Ortega Hill Bioregion, Ventura County, California

By David L. Magney

Scientific Name	Common Name	Habit	Wetland Indicator		Family	Abundance Status
			Status	Family		
<i>Garrya flavescens</i> ssp. <i>pallida</i> (Eastwood) Dahling	Pallid Silk-tassel Bush	S	.		Garryaceae	S
<i>Gayophytum diffusum</i> ssp. <i>parviflorum</i> H. Lewis & J. Szweykowski	Diffuse Gayophytum	AH	.		Onagraceae	O
<i>Gilia capitata</i> ssp. <i>abrotanifolia</i> (E. Greene) V. Grant	Blue Field Gilia	AH	.		Polemoniaceae	C
<i>Gilia ochroleuca</i> ssp. <i>lanosa</i> Hrusa	Woollystem Volcanic Gilia	AH	.		Polemoniaceae	S, 4,3
<i>Glycyrrhiza lepidota</i> (Nutt.) Pursh	American Licorice	PH	FAC		Fabaceae	S
<i>Hazardia squarrosa</i> var. <i>obtusata</i> (Greene) Jepson	Prickly Sawtooth Goldenbush	S	.		Asteraceae	C
<i>Hesperoyucca whipplei</i> ssp. <i>cespitosa</i> (M.E. Jones) A.L. Haines	Clumping Our Lord's Candle	S	.		Agavaceae	C
<i>Hesperoyucca whipplei</i> Torrey ssp. <i>whipplei</i>	Our Lord's Candle	S	.		Agavaceae	C
* <i>Hirschfeldia incana</i> (L.) Lagr.-Fossat *	Summer Mustard	PH	(FACU)		Brassicaceae	C
<i>Hoita orbicularis</i> (Lindley) Rydb.	Round-leaved Hoita	PH	OBL		Fabaceae	U
* <i>Hordeum murinum</i> ssp. <i>glaucum</i> (Steudel) Tzvelev *	Summer Barley	AG	FACU		Poaceae	C
<i>Juncus textilis</i> Buchenau	Indian or Basket Rush	PG	FACW		Juncaceae	S
<i>Keckiella breviflora</i> (Lindley) I.M. Johnston var. <i>breviflora</i>	Stubflower Penstemon, Gaping Beardtongue	S	.		Plantaginaceae	C
<i>Keckiella ternata</i> var. <i>septentrionalis</i> (Munz & Johnston) N. Holmgren	Blue-stemmed Bush Penstemon	S	.		Plantaginaceae	C
<i>Koeleria macrantha</i> (Ledeb.) J.A. Schultes	Junegrass	PG	.		Poaceae	O
<i>Lagophylla ramosissima</i> Nutt. ssp. <i>ramosissima</i>	Common Hareleaf	AH	.		Asteraceae	C
<i>Lathyrus vestitus</i> Nuttall ssp. <i>vestitus</i>	Pacific Peavine	PV	.		Fabaceae	C
<i>Leptosiphon bicolor</i> Nuttall	Bicolored Linanthus	AH	.		Polemoniaceae	R
<i>Leptosyne bigelovii</i> (A.Gray) A.Gray	Bigelow Coreopsis	AH	.		Asteraceae	C
<i>Linanthus californicus</i> (Hook. & Arn.) J.M. Porter & L.A. Johnson	Prickly Phlox	S	.		Polemoniaceae	C
<i>Lithophragma bolanderi</i> Gray	Bolander Star	PH	.		Saxifragaceae	S
<i>Lomatium mohavense</i> (Coulter & Rose) Coulter & Rose ssp. <i>mohavense</i>	Desert-parsley	PH	.		Apiaceae	O
<i>Lomatium multifidum</i> (Nutt.) R.P. McNeill & Darrach	Carrotleaf Biscuitroot	PH	.		Apiaceae	U
<i>Lonicera subspicata</i> var. <i>denudata</i> Rehder	Southern or San Diego Honeysuckle	S	.		Caprifoliaceae	C
<i>Lupinus concinnus</i> J. Agardh spp. <i>concinnus</i>	Bajada Lupine	AH	.		Fabaceae	C
<i>Lupinus formosus</i> Greene var. <i>formosus</i>	Summer Bush Lupine	PH	.		Fabaceae	C
<i>Lupinus longifolius</i> (S. Watson) Abrams	Long-leaved Bush Lupine	S	.		Fabaceae	C
<i>Lupinus microcarpus</i> Sims var. <i>microcarpus</i>	Red-flowered Lupine	AH	.		Fabaceae	C
<i>Madia exigua</i> (Smith) A. Gray	Small or Threadstem Tarplant or Madia	AH	.		Asteraceae	O
<i>Madia gracilis</i> (Smith) Keck	Slender Tarplant or Madia	AH	.		Asteraceae	C
<i>Malacothrix floccifera</i> (DC.) Blake	Woolly or Flobose Dandelion	AH	.		Asteraceae	O
* <i>Malus pumila</i> Mill. *	Apple	T	.		Rosaceae	R
<i>Melica californica</i> Scribner var. <i>californica</i>	California Melic Grass	PG	.		Poaceae	U
<i>Melica imperfecta</i> Trin.	Coast Melic Grass	PG	.		Poaceae	C
<i>Mentzelia affinis</i> Greene	Orange-spotted Stickleaf	AH	.		Loasaceae	S
<i>Mentzelia congesta</i> (Nuttall) T. & G. var. <i>congesta</i>	Congested Stickleaf	AH	.		Loasaceae	O
<i>Mentzelia dispersa</i> S. Watson	Scattered Stickleaf	AH	.		Loasaceae	O
<i>Mentzelia gracilentata</i> T. & G.	Slender Stickleaf	AH	.		Loasaceae	U
<i>Mentzelia micrantha</i> (Hook. & Arnott) T. & G.	Tiny-flowered Stickleaf	AH	.		Loasaceae	C

This checklist may be reproduced for educational or scientific purposes only, with full credit given to the author.

# Vascular Plants of Ortega Hill Bioregion, Ventura County, California

By David L. Magney

Scientific Name	Common Name	Habit	Wetland Indicator		Family	Abundance Status
			Status	Family		
<i>Mentzelia montana</i> (Davidson) Davidson ssp. <i>montana</i>	Mountain Stickleaf	AH	.		Loasaceae	S
<i>Mentzelia pectinata</i> Kellogg	Stickleaf	AH	.		Loasaceae	S
<i>Mentzelia veatchiana</i> Kellogg	Veatch Stickleaf	AH	.		Loasaceae	C
<i>Mimethanthe pilosa</i> (Benth.) Greene	Pilose or Downy Monkeyflower	AH	.		Phrymaceae	S
<i>Monardella breweri</i> var. <i>lanceolata</i> (Gray) A.C. Sanders & Elvin	Mustang Mint	AH	.		Lamiaceae	C
<i>Myriopteris</i> [ <i>Cheilanthes</i> ] <i>covillei</i> (Maxon) A. Löve & D. Löve	Coville Lip-fern	PF	.		Pteridaceae	C
<i>Nama californica</i> (Gray) J.D. Bacon	Lemmon California Waterleaf	AH	.		Namaceae	O
<i>Navarretia mellita</i> E. Greene	Sticky Navarretia	AH	FAC		Polemoniaceae	R
<i>Nemophila pedunculata</i> Benth.	Little-foot Baby Blue-eyes	AH	FAC		Hydrophyllaceae	C
<i>Nicotiana attenuata</i> Torrey	Coyote Tobacco	AH	FACU		Solanaceae	O
<i>Osmorhiza berteroi</i> DC.	Mountain Sweetroot	PH	.		Apiaceae	R
<i>Osmorhiza brachypoda</i> Torrey	Sweet Cicely	PH	.		Apiaceae	C
<i>Pellaea mucronata</i> (D.C. Eaton) D.C. Eaton in Emory var. <i>mucronata</i>	Birdsfoot Cliffbrake or Fern	PF	.		Pteridaceae	C
<i>Penstemon centranthifolius</i> Bentham	Scarlet Bugler	PH	.		Plantaginaceae	C
<i>Penstemon grinnellii</i> var. <i>scrophularioides</i> (M.E. Jones) N. Holmgren	Figwort Beardtongue	PH	.		Plantaginaceae	S
<i>Perideridia pringlei</i> (J.M. Coulter & Rose) A. Nelson & J.F. Macbr.	Adobe or Pringle Yampah	PH	.		Apiaceae	O, 4,3
<i>Phacelia brachyloba</i> (Benth.) Gray	Short-lobed Phacelia	AH	.		Hydrophyllaceae	C
<i>Phacelia cicutaria</i> var. <i>hispida</i> (A. Gray) J.T. Howell	Hispid Caterpillar Phacelia	AH	.		Hydrophyllaceae	C
<i>Phacelia curvipes</i> S. Watson var. <i>curvipes</i>	Washoe Phacelia	AH	.		Hydrophyllaceae	O
<i>Phacelia davidsonii</i> Gray	Davidson Phacelia	AH	.		Hydrophyllaceae	C
<i>Phacelia egena</i> (Brand) J.T. Howell	Rock Phacelia	PH	.		Hydrophyllaceae	C
<i>Phacelia imbricata</i> Greene ssp. <i>imbricata</i>	Mountain Phacelia	PH	.		Hydrophyllaceae	C
<i>Phacelia longipes</i> Gray	Long-stalked Phacelia	AH	.		Hydrophyllaceae	C
<i>Phacelia mutabilis</i> Greene	Changeable Phacelia	AH	.		Hydrophyllaceae	R
<i>Phacelia tanacetifolia</i> Benth.	Tansy Phacelia	AH	.		Hydrophyllaceae	C
<i>Phoradendron leucarpum</i> ssp. <i>tomentosum</i> (DC.) J.R. Abbott & R.L. Thomps.	Oak or Hairy Mistletoe	PH	.		Viscaceae	C
<i>Pinus jeffreyi</i> Greville & Balfour	Jeffrey Pine	T	.		Pinaceae	C
<i>Pinus lambertiana</i> Douglas	Sugar Pine	T	.		Pinaceae	O
<i>Pinus monophylla</i> Torrey & Frémont	Singleleaf Pinyon Pine	T	.		Pinaceae	C
<i>Pinus ponderosa</i> var. <i>pacifica</i> J.R. Haller & N.J. Vivrette	Pacific Ponderosa Pine	T	FACU		Pinaceae	O
<i>Poa secunda</i> J.S. Presl ssp. <i>secunda</i>	One-sided Bluegrass	PG	FACU		Poaceae	C
<i>Polemonium micranthum</i> Benth.	Tiny Phlox	AH	FACU		Polemoniaceae	U
<i>Populus fremontii</i> Wats. ssp. <i>fremontii</i>	Fremont Cottonwood	T	(FACW)		Salicaceae	C
<i>Prunus ilicifolia</i> (Nutt.) Walp. ssp. <i>ilicifolia</i>	Hollyleaf Cherry	S	.		Rosaceae	C
<i>Prunus virginiana</i> var. <i>demissa</i> (Nuttall) Torrey	Western Choke Cherry	S	FAC		Rosaceae	S
<i>Pseudotsuga macrocarpa</i> (Vasey) Mayr	Bigcone Spruce or False Hemlock	T	.		Pinaceae	S
<i>Psilocarphus tenellus</i> Nutt.	Slender Woolly Marbles	AH	OBL		Asteraceae	C
<i>Quercus berberidifolia</i> Leibm.	California Scrub Oak	S	.		Fagaceae	C
<i>Quercus chrysolepis</i> Liebm.	Canyon Live or Goldencup Oak	T	.		Fagaceae	C

This checklist may be reproduced for educational or scientific purposes only, with full credit given to the author.

# Vascular Plants of Ortega Hill Bioregion, Ventura County, California

By David L. Magney

Scientific Name	Common Name	Habit	Wetland Indicator		Family	Abundance Status
			Status	Family		
<i>Quercus john-tuckeri</i> K. Nixon & C.H. Muller	Tucker Oak, Desert Scrub Oak	S	.		Fagaceae	C
<i>Quercus wislizenii</i> A. de Candolle ssp. <i>wislizenii</i>	Interior Live Oak	T	.		Fagaceae	S
<i>Rafinesquia californica</i> Nutt.	California Rafinesquia or Chicory	AH	.		Asteraceae	C
<i>Rhamnus ilicifolia</i> Kellogg	Hollyleaf Redberry, Buckthorn	S	.		Rhamnaceae	C
<i>Rhus trilobata</i> var. <i>quinata</i> Jepson	Skunkbrush	S	FACU		Anacardiaceae	O
<i>Ribes californicum</i> var. <i>hesperium</i> (McClatchie) Jeps.	Southern Calif. Gooseberry	S	.		Grossulariaceae	O
<i>Ribes roezlii</i> Regel var. <i>roezlii</i>	Sierra Gooseberry	S	.		Grossulariaceae	S
<i>Rosa californica</i> Cham. & Schldl.	California Wild Rose	S	FAC		Rosaceae	C
<i>Rubus ursinus</i> Cham. & Schldl.	Pacific Blackberry	PV	FAC		Rosaceae	C
<i>Sabulina douglasii</i> (Fenzl ex T. & G.) Dellenb. & Kabereit	Douglas Sandwort	AH	.		Caryophyllaceae	C
<i>Salix exigua</i> Nuttall var. <i>exigua</i>	Narrowleaf Willow	S	FACW		Salicaceae	C
<i>Salix laevigata</i> Bebb.	Red Willow	T	FACW		Salicaceae	C
<i>Salix lasiolepis</i> Benth. var. <i>lasiolepis</i>	Arroyo Willow	T	FACW		Salicaceae	C
<i>Saltugilia splendens</i> (H. Mason & A. Grant) L.A. Johnson ssp. <i>splendens</i>	Splendid Woodland-gilia	AH	.		Polemoniaceae	C
<i>Salvia apiana</i> Jepson var. <i>apiana</i>	White Sage	S	.		Lamiaceae	C
<i>Salvia columbariae</i> Benth.	Chia	AH	.		Lamiaceae	C
<i>Sambucus nigra</i> ssp. <i>caerulea</i> (Raf.) Bolli	Blue Elderberry	S	FAC		Adoxaceae	C
<i>Sanicula crassicaulis</i> Poepp. ex DC. var. <i>crassicaulis</i>	Pacific Sanicle, Snakeroot	PH	.		Apiaceae	C
<i>Selaginella bigelovii</i> Underwood	Bigelow Spike-moss	PF	.		Selaginellaceae	C
<i>Senecio flaccidus</i> var. <i>douglasii</i> (DC.) B.L. Turner & T.M. Barkley	Shrubby Butterweed	S	.		Asteraceae	C
<i>Silene lemmonii</i> S. Watson	Lemmon Campion or Catchfly	PH	.		Caryophyllaceae	R
<i>Silene verecunda</i> S. Watson	Cuyamaca or San Francisco Campion	PH	.		Caryophyllaceae	S
* <i>Sisymbrium altissimum</i> L. *	Tumble Mustard	AH	FACU		Brassicaceae	S
<i>Stachys albens</i> A. Gray	Woolly or Whitestem Hedge Nettle	PH	OBL		Lamiaceae	C
<i>Stephanomeria cichoriacea</i> A. Gray	Chicory-leaved Milk-aster	PH	.		Asteraceae	O
<i>Stipa coronata</i> Thurber	Giant Needlegrass	PG	.		Poaceae	C
<i>Stipa speciosa</i> Trin. & Rupr.	Desert Needlegrass	PG	.		Poaceae	S
<i>Stylocline gnaphaloides</i> Nuttall	Everlasting Nest Straw	AH	.		Asteraceae	S
<i>Symphoricarpos rotundifolius</i> var. <i>parishii</i> (Rydb.) Dempster	Parish Snowberry	S	.		Caprifoliaceae	C
<i>Thysanocarpus curvipes</i> Hooker var. <i>curvipes</i>	Fringe or Hairy Lace Pod	AH	.		Brassicaceae	S
<i>Thysanocarpus laciniatus</i> Torrey & Gray var. <i>laciniatus</i>	Lace Pod	AH	.		Brassicaceae	C
<i>Toxicodendron diversilobum</i> (T. & G.) Greene	Western Poison Oak	S/V	FACU		Anacardiaceae	C
<i>Toxicoscordion</i> [ <i>Zigadenus</i> ] <i>fremontii</i> (Torrey) Rydberg	Star Lily	PH	.		Melanthiaceae	O
<i>Trifolium variegatum</i> Nutt. var. <i>variegatum</i>	Whitewort Clover	AH	FAC		Fabaceae	S
<i>Turricula parryi</i> (A. Gray) J.F. Macbr.	Poodle-dog Bush	S	.		Namaceae	C
<i>Turritis glabra</i> L.	Tower Mustard	BH	.		Brassicaceae	S
<i>Typha domingensis</i> Pers.	Southern Cattail	PH	OBL		Typhaceae	C
<i>Umbellularia californica</i> (Hook. & Arn.) Nutt. var. <i>californica</i>	California Bay	T	FAC		Lauraceae	C
<i>Uropappus lindleyi</i> (DC.) Nutt.	Silver Puffs	AH	.		Asteraceae	C

This checklist may be reproduced for educational or scientific purposes only, with full credit given to the author.

# Vascular Plants of Ortega Hill Bioregion, Ventura County, California

By David L. Magney

Scientific Name	Common Name	Habit	Wetland Indicator		Family	Abundance Status
			Status	Family		
<i>Urtica dioica</i> L. ssp. <i>holosericea</i> (Nutt.) Thorne	Hoary or Giant Stinging Nettle	PH	FAC	.	Urticaceae	O
* <i>Veronica anagallis-aquatica</i> L. *	Water or Common Speedwell	PH	OBL	.	Plantaginaceae	C
<i>Viola pedunculata</i> T. & G. ssp. <i>pedunculata</i>	Johnny-Jump-Up	PH	.	.	Violaceae	S
<i>Viola purpurea</i> Kellogg ssp. <i>purpurea</i>	Purple or Mountain Violet	PH	.	.	Violaceae	S
<i>Viola purpurea</i> ssp. <i>quercetorum</i> (M. Baker & J. Clausen) R.J. Little	Oak Violet	PH	.	.	Violaceae	S
<i>Vulpia microstachys</i> var. <i>pauciflora</i> (Beal) Lonard & Gould	Few-flowered Side-oats	AG	.	.	Poaceae	O
* <i>Vulpia myuros</i> forma <i>megalura</i> (Nutt.) Stace & R. Cotton *	Foxtail Fescue	AG	FACU	.	Poaceae	S
<i>Yosemitea repanda</i> (S. Watson) P.J. Alexander & Windham	Yosemite Rock Cress	PH	.	.	Brassicaceae	S

Notes: Scientific nomenclature follows the Flora of North America Editorial Committee (1993-2018), *The Jepson Manual* (Baldwin et al. 2012), Baker et al. (2012 for Phrymaceae ),

Nesom (2012a & 2012b for *Erythranthe* , 2013 for *Diplacus* ), Tulig & Nesom (2012 for *Diplacus* ), Hasenstab-Lehman & Simpson (2012 for *Cryptantha* ),

Burge & Zhukovsky (2013 for *Ceanothus vestitus* complex), Schneider (2016 for *Aphyllon* ), Colwell et al. (2017 for *Aphyllon* ), and Broich (1987 for *Lathyrus vestitus* ).

Most current taxomomy is followed when changed have occurred since publication of the above listed references.

Common names follow Abrams and Ferris (1960), Neihaus and Ripper (1976), and DeGarmo (1980).

An "\*" indicates non-native taxa that have become naturalized or persist without cultivation.

#### Habit definitions:

AF = annual fern or fern ally.

AG = annual grass or graminoid.

AH = annual herb.

BH = biennial herb.

PF = perennial fern or fern ally.

PG = perennial grass or graminoid.

PH = perennial herb.

PV = perennial vine.

S = shrub.

T = tree.

Wetland indicator status (Lichvar et al. 2016): OBL = obligate wetland species, occurs almost always in wetlands (>99% probability)

FACW = facultative wetland species, usually found in wetlands (67-99% probability).

FAC = facultative species, equally likely to occur in wetlands or nonwetlands (34-67% probability).

FACU = facultative upland species, usually occur in nonwetlands (67-99% probability).

A period "." indicates that no wetland indicator status has been given in Lichvar et al. (2016).

Parentheses around an indicator status indicates the wetland status as suggested by David L. Magney.

#### Abundance status definitions for all of Ventura County:

R = Rare (1-5 extant populations known)

U = Uncommon (6-10 extant populations known)

S = Scattered (11-20 extant populations known)

O = Occasional (21-30 extant populations known)

C = Common (>30 extant populations known)

X = Expected but not yet found

T = Type Locality

#### Formal listing status definitions:

FE = Federally listed Endangered

FT = Federally listed Threatened

SE = California listed Endangered

ST = California listed Threatened

SR = California listed Rare

FS = Forest Service Sensitive Species

#### CNPS Rarity Ranking definitions:

1A = CNPS 1A

1B.x = CNPS 1B

2.x = CNPS 2

3.x = CNPS 3

4.x = CNPS 4

Developed by David L. Magney 2023. Checklist may be used for educational and nonprofit purposes only.

Based on voucher specimens at one or more California public herbaria and direct observations by author.

This checklist may be reproduced for educational or scientific purposes only, with full credit given to the author.

David L. Magney, P.O. Box 1539, Cedar Ridge, CA 95924. www.magney.org



# Vascular Plants of Ortega Hill Bioregion, Ventura County, California

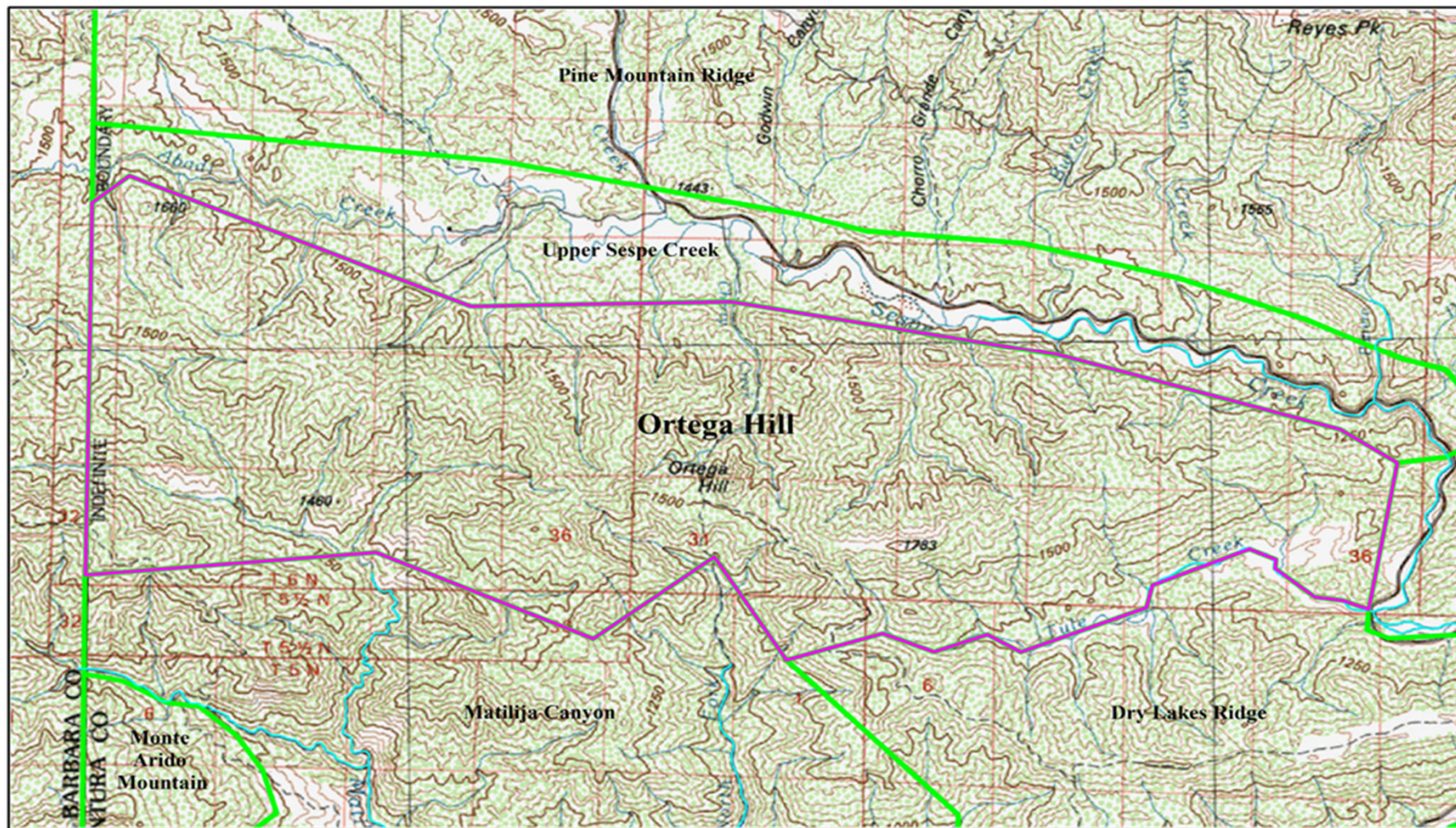
By David L. Magney

Scientific Name

Common Name

Habit  
Wetland  
Indicator  
Status  
Family

Abundance  
Status



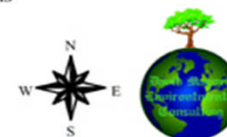
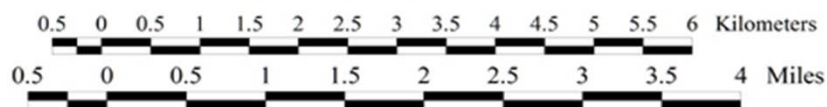
## Ortega Hill Floristic Bioregion

 Ortega Hill Floristic Bioregion

 Ventura County Bioregions

 Streams

Map created 14 March 2023  
David Magney Environmental Consulting  
P.O. Box 1539, Cedar Ridge, CA 95924  
530/273-1799 - [www.magney.org](http://www.magney.org)  
Projection: NAD 1983, CA State Plane, Zone V (feet)  
Base Map: Cuyama, Calif. USGS 100,000-minute Quadrangle



This checklist may be reproduced for educational or scientific purposes only, with full credit given to the author.

David L. Magney, P.O. Box 1539, Cedar Ridge, CA 95924. [www.magney.org](http://www.magney.org)