

Vascular Plants of the Upper Middle Piru Creek Bioregion, Ventura County, California

By David L. Magney

Scientific Name	Common Name	Habit	Wetland Indicator		Abundance Status
			Status	Family	
<i>Acmispon glaber</i> (Vogel) Brouillet var. <i>glaber</i>	Deerweed, California Broom	PH	.	Fabaceae	C
<i>Acmispon strigosus</i> (Nuttall) Brouillet var. <i>strigosus</i>	Strigose Lotus or Hosackia	AH	.	Fabaceae	C
<i>Alnus rhombifolia</i> Nuttall	White Alder	T	FACW	Betulaceae	C
<i>Amorpha californica</i> Nuttall var. <i>californica</i>	California False Indigo	S	FAC	Fabaceae	C
* <i>Apium graveolens</i> L. *	Celery	PH	(FACW)	Apiaceae	O
<i>Aquilegia formosa</i> var. <i>truncata</i> (Fischer & C.A. Meyer) Baker	Truncate Crimson Columbine	PH	FAC	Ranunculaceae	S
<i>Arctostaphylos glauca</i> Lindley	Bigberry Manzanita	S	.	Ericaceae	C
<i>Artemisia californica</i> Less.	California Sagebrush	S	.	Asteraceae	C
<i>Artemisia douglasiana</i> Besser	Mugwort	PH	FAC	Asteraceae	C
<i>Artemisia dracunculus</i> L.	Tarragon, Dragon Tarragon	PH	(FACW)	Asteraceae	C
<i>Artemisia tridentata</i> Nuttall ssp. <i>tridentata</i>	Great Basin Sagebrush	S	.	Asteraceae	C
<i>Asclepias californica</i> E. Greene ssp. <i>californica</i>	California Milkweed	AH	.	Apocynaceae	C
<i>Asclepias fascicularis</i> Decne.	Narrowleaf Milkweed	PH	FAC	Apocynaceae	C
<i>Astragalus didymocarpus</i> var. <i>obispoensis</i> (Rydb.) Jeps.	San Luis Obispo Two-seeded Milkvetch	AH	.	Fabaceae	R
<i>Atriplex canescens</i> (Pursh) Nuttall var. <i>canescens</i>	Fourwing or Hoary Saltbush	S	(FACU)	Chenopodiaceae	O
<i>Baccharis pilularis</i> ssp. <i>consanguinea</i> (DC.) C.G. Wolf	Coyote Brush	S	(FACU)	Asteraceae	C
<i>Baccharis salicifolia</i> (Ruiz Lopez & Pavon) Pers. ssp. <i>salicifolia</i>	Mulefat, Seep-willow, Water-wally	S	FAC	Asteraceae	C
<i>Berula erecta</i> (Huds.) Coville	Cutleaf Water-parsnip	PH	OBL	Apiaceae	U
<i>Boechnera californica</i> (Rollins) Windham & Al-Shehbaz	California Rockcress	PH	.	Brassicaceae	U
<i>Boechnera pulchra</i> (M.E. Jones ex S. Watson) W.A. Weber	Desert Rock Cress	PH	.	Brassicaceae	C
<i>Boechnera sparsiflora</i> (Nutt.) Dorn	Few-flowered Rock Cress	PH	.	Brassicaceae	C
<i>Bolboschoenus maritimus</i> var. <i>paludosus</i> (A. Nelson) T. Koyama	Saltmarsh Bulrush	PG	OBL	Cyperaceae	O
<i>Brickellia longifolia</i> var. <i>multiflora</i> (Kellogg) Cronquist	Gum-leaved Brickellbush	S	.	Asteraceae	R
<i>Brickellia nevini</i> Gray	Nevin Brickellbush	S	.	Asteraceae	C
* <i>Bromus diandrus</i> Roth. ssp. <i>diandrus</i> *	Ripgut Grass	AG	(FACU)	Poaceae	C
<i>Bromus laevipes</i> Shear	Woodland Brome	PG	.	Poaceae	S
<i>Calochortus clavatus</i> S. Watson var. <i>clavatus</i>	Club-haired Mariposa Lily	PG	.	Liliaceae	C, 4,3
<i>Calochortus clavatus</i> ssp. <i>pallidus</i> (Hoover) Munz	Pale Yellow Mariposa Lily	PG	.	Liliaceae	U
<i>Carex senta</i> Boott	Rough Sedge	PG	OBL	Cyperaceae	O
<i>Caulanthus lasiophyllus</i> (Hooker & Arnott) Payson	California Mustard	AH	.	Brassicaceae	C
<i>Ceanothus cuneatus</i> (Hooker) Nuttall ex Torr. & Gray var. <i>cuneatus</i>	Buck Brush, Wedgeleaf Ceanothus	S	.	Rhamnaceae	C
<i>Ceanothus oliganthus</i> Nuttall var. <i>oliganthus</i>	Hoary Ceanothus	S	.	Rhamnaceae	C
<i>Ceanothus pauciflorus</i> DC.	Few-flowered Ceanothus	S	.	Rhamnaceae	C
* <i>Centaurea benedicta</i> (L.) L. * [<i>Cnicus benedictus</i> L.]	Blessed Thistle	AH	.	Asteraceae	S
<i>Chorizanthe watsonii</i> T. & G.	Watson Spineflower	AH	.	Polygonaceae	U
<i>Chorizanthe xanti</i> S. Watson var. <i>xanti</i>	Xantus Spineflower	AH	.	Polygonaceae	S
* <i>Cirsium vulgare</i> (Savi) Tenore *	Common or Bull Thistle	BH	FACU	Asteraceae	S
<i>Clarkia cylindrica</i> (Jepson) H. Lewis & M. Lewis ssp. <i>cylindrica</i>	Cylindrical Godetia	AH	.	Onagraceae	O
<i>Clarkia unguiculata</i> Lindley	Elegant Farwell-to-Spring or Clarkia	AH	.	Onagraceae	C
<i>Clematis ligusticifolia</i> Nuttall	Virgin's Bower, Old Man's Beard	PV	FAC	Ranunculaceae	C
<i>Corethrogyne filaginifolia</i> (Hook. & Arn.) Nutt. var. <i>filaginifolia</i>	California Cudweed-aster	PH	.	Asteraceae	C
<i>Croton californicus</i> Muell. Arg. var. <i>californicus</i>	California Croton	PH	.	Euphorbiaceae	O
<i>Cryptantha decipiens</i> (M.E. Jones) A.A.Heller	Gravel Forget-Me-Not	AH	.	Boraginaceae	O
<i>Cryptantha nevadensis</i> A. Nelson & Kennedy var. <i>nevadensis</i>	Nevada Forget-Me-Not	AH	.	Boraginaceae	S
<i>Deinandra fasciculata</i> (DC.) E. Greene	Fascicled Tarplant	AH	FACU	Asteraceae	C

This checklist may be reproduced for educational or scientific purposes only, with full credit given to the author.

Vascular Plants of the Upper Middle Piru Creek Bioregion, Ventura County, California

By David L. Magney

Scientific Name	Common Name	Habit	Wetland Indicator		Family	Abundance Status
			Status	Family		
<i>Diplacus calycinus</i> Eastw.	Fuzzy Bush Monkeyflower	S	.		Phrymaceae	C
<i>Diplacus longiflorus</i> (Nuttall) A. Grant	Sticky Bush Monkeyflower	S	FACU		Phrymaceae	C
<i>Dipterostemon capitatus</i> (Bentham) Rydb. ssp. <i>capitatus</i>	Blue Dicks	PG	FACU		Thymidaceae	C
<i>Distichlis spicata</i> (L.) E. Greene	Saltgrass	PG	FAC		Poaceae	C
<i>Dudleya cymosa</i> ssp. <i>pumila</i> (Rose) K. Nakai	Santa Monica Mtns. Live-forever	PH	.		Crassulaceae	U
<i>Dudleya lanceolata</i> (Nuttall) Britton & Rose	Lanceleaf Live-forever, Rock Lettuce	PH	.		Crassulaceae	C
<i>Eleocharis parishii</i> Britt.	Parish Spikerush	PG	FACW		Cyperaceae	C
<i>Elymus elymoides</i> (Raf.) Swezey ssp. <i>elymoides</i>	Bottlebrush Squirreltail	PG	FACU		Poaceae	C
<i>Elymus glaucus</i> Buckl. ssp. <i>glaucus</i>	Blue or Woodland Wildrye	PG	FACU		Poaceae	C
<i>Emmenanthe penduliflora</i> Bentham var. <i>penduliflora</i>	Whispering Bells	AH	.		Hydrophyllaceae	C
<i>Epilobium canum</i> (Greene) Raven ssp. <i>canum</i>	California Fuchsia	PH	.		Onagraceae	C
<i>Epilobium ciliatum</i> Raf. ssp. <i>ciliatum</i>	Northern Willow-herb	AH	FACW		Onagraceae	C
<i>Epipactis gigantea</i> Hook.	Stream Orchid	PH	OBL		Orchidaceae	O
<i>Eremothera boothii</i> ssp. <i>decorticans</i> (Hooker & Arnott) W.L. Wagner & Hoch	Booth Shreading Primrose	AH	.		Onagraceae	C
<i>Ericameria cuneata</i> (Gray) McClatchie var. <i>cuneata</i>	Wedgeleaf Goldenbush	S	.		Asteraceae	S
<i>Ericameria linearifolia</i> (DC.) Urb. & Wussow	Interior Goldenbush, Stenotopsis	S	.		Asteraceae	C
<i>Erigeron foliosus</i> Nuttall var. <i>foliosus</i>	Leafy Fleabane or Daisy	PH	.		Asteraceae	C
<i>Eriodictyon crassifolium</i> var. <i>nigrescens</i> Brand	Thickleaf Yerba Santa	S	.		Namaceae	C
<i>Eriogonum elongatum</i> Bentham var. <i>elongatum</i>	Long-stemmed Buckwheat	PH	.		Polygonaceae	C
<i>Eriogonum fasciculatum</i> var. <i>foliolosum</i> (Nuttall) Abrams	Leafy California Buckwheat	S	.		Polygonaceae	C
<i>Eriogonum gracile</i> Bentham var. <i>gracile</i>	Slender Woolly Buckwheat	AH	.		Polygonaceae	O
<i>Eriophyllum confertiflorum</i> (DC.) A. Gray var. <i>confertiflorum</i>	Golden Yarrow	PH	.		Asteraceae	C
* <i>Erodium moschatum</i> (Burm. F.) L'Her. var. <i>moschatum</i> *	Whitestem Filaree	AH	.		Geraniaceae	O
<i>Erythranthe guttata</i> (Fischer ex DC.) Nesom [<i>Mimulus guttatus</i> DC.]	Common Streamside Monkeyflower	A/PH	OBL		Phrymaceae	C
<i>Eschscholzia minutiflora</i> S. Watson	Tiny-flowered Poppy	AH	.		Papaveraceae	U
<i>Eucrypta chrysanthemifolia</i> (Benth.) Greene var. <i>chrysanthemifolia</i>	Eucrypta	AH	.		Hydrophyllaceae	C
<i>Euthamia occidentalis</i> Nuttall	Western Goldenrod	PH	FACW		Asteraceae	O
<i>Frangula californica</i> ssp. <i>tomentella</i> (Benth.) Kartesz & Gandhi	Hoary Coffeeberry	S	.		Rhamnaceae	C
<i>Galium angustifolium</i> Nuttall ssp. <i>angustifolium</i>	Chaparral or Narrow-leaved Bedstraw	S	.		Rubiaceae	C
<i>Garrya flavescens</i> S. Watson ssp. <i>flavescens</i>	Silk-tassel Bush	S	.		Garryaceae	O
<i>Garrya veatchii</i> Kellogg	Veatch's Silk-tassel Bush	S	.		Garryaceae	C
<i>Gilia brecciarum</i> M.E. Jones ssp. <i>brecciarum</i>	Breccia Gilia	AH	.		Polemoniaceae	O
<i>Gilia capitata</i> ssp. <i>abrotanifolia</i> (E. Greene) V. Grant	Blue Field Gilia	AH	.		Polemoniaceae	C
<i>Glycyrrhiza lepidota</i> (Nutt.) Pursh	American Licorice	PH	FAC		Fabaceae	S
<i>Greenocharis circumsissa</i> (Hook. & Arn.) Ryd. var. <i>circumsissa</i> [<i>Cryptantha c. var. c.</i>]	Greenocharis	AH	.		Boraginaceae	C
<i>Heteromeles arbutifolia</i> (Lindley) Roemer	Toyon, Christmas Holly, Hollywood	S	.		Rosaceae	C
* <i>Hirschfeldia incana</i> (L.) Lagr.-Fossat *	Summer Mustard	PH	(FACU)		Brassicaceae	C
<i>Holodiscus discolor</i> var. <i>macrophyllus</i> (Rydb.) Jeps.	Rock Spiraea	S	FACU		Rosaceae	R
<i>Juglans californica</i> S. Watson	Southern California Black Walnut	T	FACU		Juglandaceae	C, 4.2
<i>Juncus balticus</i> Willd. ssp. <i>balticus</i>	Baltic Rush	PG	FACW		Juncaceae	O
<i>Juncus bufonius</i> L. var. <i>bufonius</i>	Common Toad Rush	AG	FACW		Juncaceae	O
<i>Lastarriaea coriacea</i> (Goodman) Hoover	Lastarriaea	AH	.		Polygonaceae	U
<i>Leptosiphon liniflorus</i> (Bentham) J.M. Porter & L.A. Johnson	Linanthus	AH	.		Polemoniaceae	O
<i>Leptosyne calliopsidea</i> (DC.) A.Gray	Leafy-stemmed Coreopsis	AH	.		Asteraceae	U
<i>Linanthus californicus</i> (Hook. & Arn.) J.M. Porter & L.A. Johnson	Prickly Phlox	S	.		Polemoniaceae	C

This checklist may be reproduced for educational or scientific purposes only, with full credit given to the author.

Vascular Plants of the Upper Middle Piru Creek Bioregion, Ventura County, California
By David L. Magney

Scientific Name	Common Name	Habit	Wetland Indicator		Family	Abundance Status
			Status	Family		
<i>Lonicera interrupta</i> Benth.	Chaparral Honeysuckle	S	.		Caprifoliaceae	S
<i>Lupinus hirsutissimus</i> Benth.	Nettle or Stinging Lupine	AH	.		Fabaceae	C
<i>Lupinus microcarpus</i> var. <i>densiflorus</i> (Benth) Jeps.	Densely Red-flowered Lupine	AH	.		Fabaceae	S
<i>Lupinus sparsiflorus</i> Benth. ssp. <i>sparsiflorus</i>	Few-flowered or Loose-flowered Lupine	AH	.		Fabaceae	C
<i>Lupinus truncatus</i> Nuttall	Truncate-leaved Lupine	AH	.		Fabaceae	C
<i>Malacothamnus fasciculatus</i> (Nutt.ex T.& G.) Greene var. <i>fasciculatus</i>	Chaparral Bushmallow	S	.		Malvaceae	C
<i>Malacothamnus fasciculatus</i> var. <i>laxiflorus</i> (Gray) Kearney	Lax-flowered Bushmallow	S	.		Malvaceae	R
<i>Malacothamnus fasciculatus</i> var. <i>nuttallii</i> (Abrams) Kearney	Nuttall Bushmallow	S	.		Malvaceae	O
<i>Malacothrix saxatilis</i> var. <i>tenuifolia</i> (Nutt.) Gray	Tenuated Cliff-aster	PH	.		Asteraceae	C
* <i>Marrubium vulgare</i> L. *	White Horehound	S		FACU	Lamiaceae	C
* <i>Medicago polymorpha</i> L. *	Common Burclover	AH		FACU	Fabaceae	C
<i>Mentzelia veatchiana</i> Kellogg	Veatch Stickleaf	AH	.		Loasaceae	C
<i>Mirabilis laevis</i> var. <i>crassifolia</i> A. Gray (Choisy) Spellenberg	California Wishbone Bush	PH	.		Nyctaginaceae	C
<i>Muilla maritima</i> (Torrey) S. Watson	Common Muilla	PG	.		Themidaceae	O
<i>Myriopteris</i> [<i>Cheilanthes</i>] <i>covillei</i> (Maxon) A. Löve & D. Löve	Coville Lip-fern	PF	.		Pteridaceae	C
<i>Navarretia hamata</i> E. Greene ssp. <i>hamata</i>	Skunk Navarretia	AH	.		Polemoniaceae	S
<i>Nemophila menziesii</i> var. <i>integrifolia</i> Parish	Baby Blue-eyes	AH	.		Hydrophyllaceae	U
* <i>Oenothera biennis</i> L. *	Common Evening-primrose	BH		FACU	Onagraceae	R
<i>Parietaria pennsylvanica</i> Muhlenberg ex Willdenow	Pennsylvania Pellitory	AH		FACU	Urticaceae	R
<i>Peritoma arborea</i> var. <i>globosa</i> (Coville) H.H. Iltis	Bladderpod	S	.		Cleomaceae	S
<i>Phacelia affinis</i> Gray var. <i>affinis</i>	Limestone Phacelia	AH	.		Hydrophyllaceae	S
<i>Phacelia cryptantha</i> E. Greene	Forget-Me-Not Phacelia	AH	.		Hydrophyllaceae	R
<i>Phoradendron leucarpum</i> ssp. <i>tomentosum</i> (DC.) J.R. Abbott & R.L. Thomps.	Oak or Hairy Mistletoe	PH	.		Viscaceae	C
<i>Plagiobothrys arizonicus</i> (Gray) Gray	Arizona Popcornflower	AH	.		Boraginaceae	U
<i>Plantago patagonica</i> Jacq.	Patagonia Plantain	AH	.		Plantaginaceae	R
<i>Platanus racemosa</i> Nuttall var. <i>racemosa</i>	California or Western Sycamore	T		FACU	Platanaceae	C
<i>Prunus ilicifolia</i> (Nutt.) Walp. ssp. <i>ilicifolia</i>	Hollyleaf Cherry	S	.		Rosaceae	C
<i>Pseudotsuga macrocarpa</i> (Vasey) Mayr	Bigcone Spruce or False Hemlock	T	.		Pinaceae	C
<i>Quercus agrifolia</i> Nee var. <i>agrifolia</i>	Coast Live Oak	T		(FACU)	Fagaceae	C
<i>Quercus douglasii</i> H. & A.	Blue Oak	T	.		Fagaceae	R
<i>Rhus trilobata</i> var. <i>malacophylla</i> (E. Greene) Jepson	Woolly Skunkbrush	S		FACU	Anacardiaceae	S
<i>Ribes quercetorum</i> Greene	Oak Gooseberry	S	.		Grossulariaceae	S
<i>Rosa californica</i> Cham. & Schldl.	California Wild Rose	S		FAC	Rosaceae	C
<i>Rumex salicifolius</i> J.A. Weinm. [var. <i>salicifolius</i>]	Willow Dock	PH		FACW	Polygonaceae	C
<i>Sabulina douglasii</i> (Fenzl ex T. & G.) Dellenb.& Kabereit	Douglas Sandwort	AH	.		Caryophyllaceae	C
<i>Salix laevigata</i> Bebb.	Red Willow	T		FACW	Salicaceae	C
<i>Salix lasiolepis</i> Benth. var. <i>lasiolepis</i>	Arroyo Willow	T		FACW	Salicaceae	C
<i>Salvia apiana</i> Jepson var. <i>apiana</i>	White Sage	S	.		Lamiaceae	C
<i>Salvia dorrii</i> var. <i>pilosa</i> (Gray) Strachan & Reveal	Pilose Desert Sage	S	.		Lamiaceae	R
<i>Salvia leucophylla</i> Greene	Purple Sage	S	.		Lamiaceae	C
<i>Selaginella bigelovii</i> Underwood	Bigelow Spike-moss, Bigelow Little Clubmoss	PF	.		Selaginellaceae	C
<i>Stephanomeria pauciflora</i> (Nutt.) Nelson var. <i>pauciflora</i>	Wire-lettuce	PH	.		Asteraceae	S
<i>Stipa coronata</i> Thurber	Giant Needlegrass	PG	.		Poaceae	C
<i>Tauschia arguta</i> (Torrey & Gray) J.F. Macbr.	Southern Tauschia	PH	.		Apiaceae	O
<i>Toxicodendron diversilobum</i> (T. & G.) Greene	Western Poison Oak	S/V		FACU	Anacardiaceae	C

This checklist may be reproduced for educational or scientific purposes only, with full credit given to the author.

Vascular Plants of the Upper Middle Piru Creek Bioregion, Ventura County, California

By David L. Magney

Scientific Name	Common Name	Wetland Indicator			Abundance Status
		Habit	Status	Family	
<i>Trichostema lanatum</i> Bentham	Woolly Bluecurls, Romero	S	.	Lamiaceae	C

Notes: Scientific nomenclature follows the Flora of North America Editorial Committee (1993-), *The Jepson Manual* (Baldwin et al. 2012), Baker et al. (2012 for Phrymaceae), Nesom (2012a & 2012b for *Erythranthe*, 2013 for *Diplacus*), Tulig & Nesom (2012 for *Diplacus*), Hasenstab-Lehman & Simpson (2012 for *Cryptantha*), Burge & Zhukovsky (2013 for *Ceanothus vestitus* complex), Schneider (2016 for *Aphyllon*), Colwell et al. (2017 for *Aphyllon*), and Broich (1987 for *Lathyrus vestitus*). Most current taxonomy is followed when changed have occurred since publication of the above listed references. Common names follow Abrams and Ferris (1960), Neihaus and Ripper (1976), and DeGarmo (1980). An "*" indicates non-native taxa that have become naturalized or persist without cultivation.

Habit definitions:

- | | |
|-----------------------------------|------------------------------------|
| AF = annual fern or fern ally. | PG = perennial grass or graminoid. |
| AG = annual grass or graminoid. | PH = perennial herb. |
| AH = annual herb. | PV = perennial vine. |
| BH = biennial herb. | S = shrub. |
| PF = perennial fern or fern ally. | T = tree. |

Wetland indicator status (Lichvar et al. 2016): OBL = obligate wetland species, occurs almost always in wetlands (>99% probability)

FACW = facultative wetland species, usually found in wetlands (67-99% probability).

FAC = facultative species, equally likely to occur in wetlands or nonwetlands (34-67% probability).

FACU = facultative upland species, usually occur in nonwetlands (67-99% probability).

A period "." indicates that no wetland indicator status has been given in Lichvar et al. (2016).

Parentheses around an indicator status indicates the wetland status as suggested by David L. Magney.

Abundance status definitions for Ventura County:

- R = Rare (1-5 extant populations known)
- U = Uncommon (6-10 extant populations known)
- S = Scattered (11-20 extant populations known)
- O = Occasional (21-30 extant populations known)
- C = Common (>30 extant populations known)
- X = Expected but not yet found
- T = Type Locality

Listing status definitions:

- FE = Federally listed Endangered
- FT = Federally listed Threatened
- SE = California listed Endangered
- ST = California listed Threatened
- SR = California listed Rare
- FS = Forest Service Sensitive Species

CNPS Rarity Ranking definitions:

- 1A = CNPS 1A
- 1B.x = CNPS 1B
- 2.x = CNPS 2
- 3.x = CNPS 3
- 4.x = CNPS 4

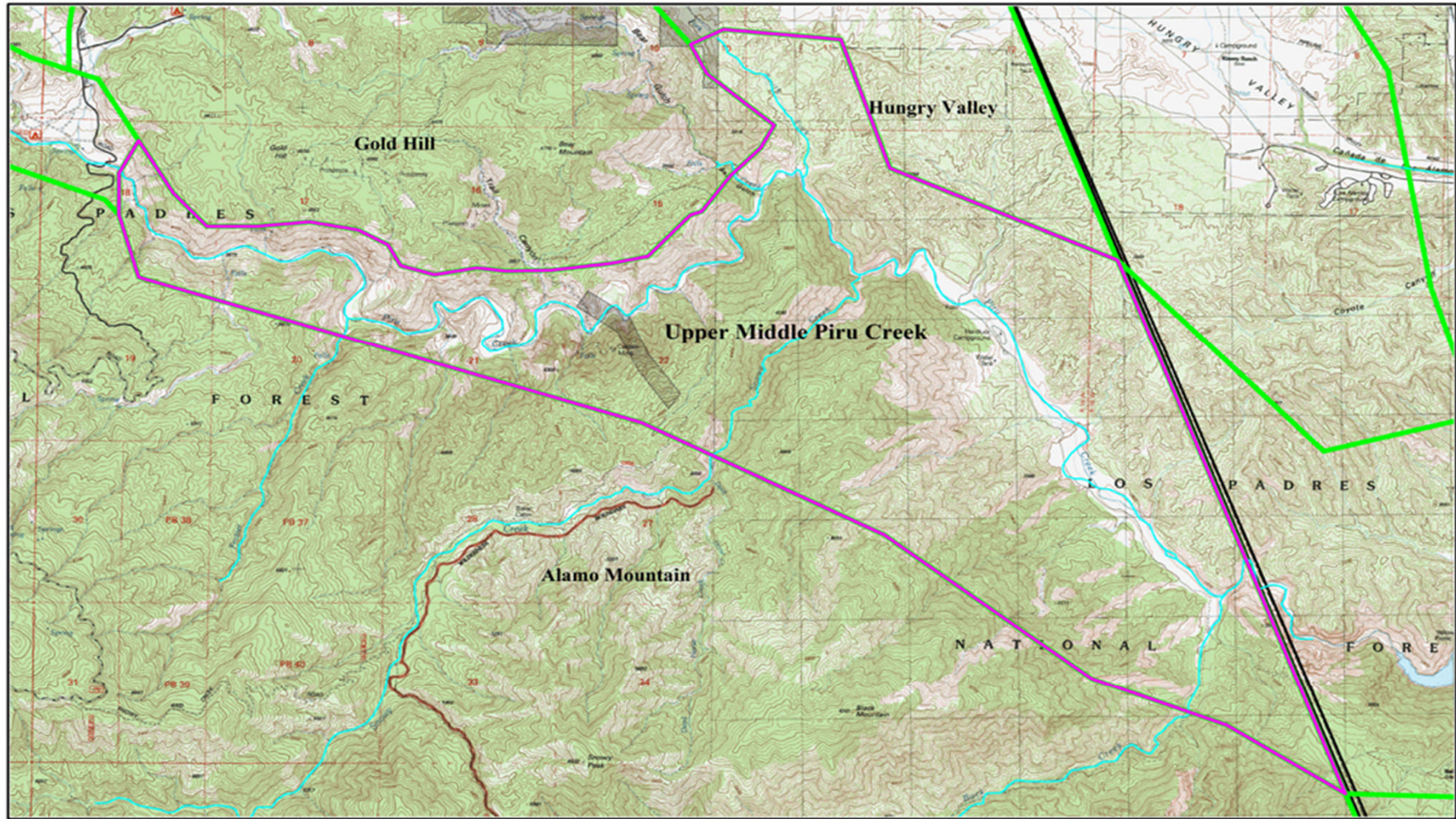
Developed by David L. Magney 2023. Checklist may be used for educational and nonprofit purposes only.

Based on voucher specimens at one or more California public herbaria and direct observations by author.

Vascular Plants of the Upper Middle Piru Creek Bioregion, Ventura County, California

By David L. Magney

Scientific Name	Common Name	Habit	Wetland Indicator Status	Family	Abundance Status
-----------------	-------------	-------	--------------------------	--------	------------------



Upper Middle Piru Creek Floristic Bioregion

 Upper Middle Piru Creek Floristic Bioregion

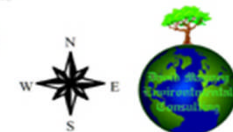
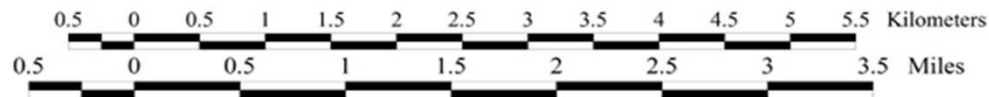
 Ventura County Bioregions

 Streams

Map created 14 March 2023
David Magney Environmental Consulting
P.O. Box 1539, Cedar Ridge, CA 95924
530/273-1799 - www.magney.org

Projection: NAD 1983, CA State Plane, Zone V (feet)

Base Map: Alamo Mountain, Calif. & Black Mountain, Calif. USGS 7.5-minute Quadrangles



This checklist may be reproduced for educational or scientific purposes only, with full credit given to the author.

David L. Magney, P.O. Box 1539, Cedar Ridge, CA 95924. www.magney.org