

Vascular Plants of the Upper Sespe Creek Bioregion, Ventura County, California
By David L. Magney

Scientific Name	Common Name	Habit	Wetland Indicator		Abundance Status
			Status	Family	
<i>Acanthomintha obovata</i> var. <i>cordata</i> Jokerst	Heartleaf Thornmint	AH	.	Lamiaceae	S, 4,2
<i>Acanthomintha obovata</i> Jeps. var. <i>obovata</i>	Heartleaf Thornmint	AH	.	Lamiaceae	S, 4,2
<i>Acmispon americanus</i> (Nuttall) Rydb. var. <i>americanus</i>	Spanish Clover, American Birds-foot Trefoil	AH	UPL	Fabaceae	O
<i>Acmispon brachycarpus</i> (Bentham) D.D. Sokoloff	Hill Lotus, Short-podded Hosackia	AH	.	Fabaceae	O
<i>Acmispon denticulatus</i> (Drew) D.D. Sokoloff	White Lotus	AH	.	Fabaceae	U
<i>Acmispon glaber</i> (Vogel) Brouillet var. <i>glaber</i>	Deerweed, California Broom	PH	.	Fabaceae	C
<i>Acmispon grandiflorus</i> (Bentham) Brouillet var. <i>grandiflorus</i>	Large-flowered Lotus or Hosackia	PH	.	Fabaceae	S
<i>Acmispon maritimus</i> (Nuttall) D.D. Sokoloff var. <i>maritimus</i>	Coastal Lotus or Hosackia	AH	.	Fabaceae	C
<i>Acmispon procumbens</i> (E. Greene) Brouillet var. <i>procumbens</i>	Silky California Broom	PH	.	Fabaceae	S
<i>Acmispon strigosus</i> (Nuttall) Brouillet var. <i>strigosus</i>	Strigose Lotus or Hosackia	AH	.	Fabaceae	C
<i>Acmispon wrangelianus</i> (Fischer & C. Meyer) D.D. Sokoloff	Chile Lotus or Hosackia	AH	.	Fabaceae	S
<i>Acourtia microcephala</i> DC.	Sacapellote	PH	.	Asteraceae	C
<i>Adenostoma fasciculatum</i> Hook. & Arn. var. <i>fasciculatum</i>	Chamise	S	.	Rosaceae	C
<i>Adiantum capillus-veneris</i> L.	Southern Maidenhair, Venushair Fern	PF	FACW	Pteridaceae	S
<i>Agoseris retrorsa</i> (Bentham) E. Greene	Spear-leaved or Retrorse Mountain Dandelion	PH	.	Asteraceae	C
<i>Allium fimbriatum</i> S. Watson var. <i>fimbriatum</i>	Fringed Onion	PG	.	Alliaceae	O
<i>Allophyllum divaricatum</i> (Nuttall) A.D. Grant & V. Grant	Divaricate Allophyllum	AH	.	Polemoniaceae	U
<i>Allophyllum gilioides</i> ssp. <i>violaceum</i> (A.A. Heller) Day	Violet Phlox	AH	FAC	Polemoniaceae	S
<i>Allophyllum glutinosum</i> (Bentham) A.D. Grant & V. Grant	Sticky Allophyllum	AH	.	Polemoniaceae	O
<i>Alnus rhombifolia</i> Nuttall	White Alder	T	FACW	Betulaceae	C
* <i>Alyssum alyssoides</i> (L) L. *	Alyssum	PH	.	Brassicaceae	R
<i>Ambrosia acanthicarpa</i> Hooker	Burweed, Annual Bur-sage	AH	.	Asteraceae	C
<i>Ambrosia psilostachya</i> var. <i>californica</i> (Rydb.) Blake	Western Ragweed	BH	FACU	Asteraceae	C
<i>Amorpha californica</i> Nuttall var. <i>californica</i>	California False Indigo	S	FAC	Fabaceae	C
<i>Amsinckia douglasiana</i> A. DC.	Douglas Fiddleneck	AH	.	Boraginaceae	U, 4,2
<i>Amsinckia tessellata</i> var. <i>gloriosa</i> (Suksd.) Hoover	Glorious Fiddleneck	AH	.	Boraginaceae	S
<i>Amsinckia tessellata</i> Gray var. <i>tessellata</i>	Devil's Lettuce, Tessellate Fiddleneck	AH	.	Boraginaceae	S
<i>Ancistrocarphus filagineus</i> Gray	Woolly Fishhooks	AH	.	Asteraceae	S
<i>Antirrhinum</i> [<i>multiflorum</i>] <i>thompsonii</i> D.J. Keil	Sticky Snapdragon	S	.	Plantaginaceae	O
<i>Aphyllon fasciculatum</i> (Nuttall) Torr. & A. Gray	Clustered Broom-rape	PH	.	Orobanchaceae	O
<i>Aphyllon purpureum</i> (A. Heller) J. Holub	Purple Broom-rape	PH	.	Orobanchaceae	R
<i>Aphyllon tuberosum</i> (A. Gray) A. Gray	Chamise Broom-rape	PH	.	Orobanchaceae	O
<i>Apocynum cannabinum</i> L.	Indian Hemp	PH	FAC	Apocynaceae	S
<i>Apocynum Xmedium</i> E. Greene	Bitter Dogbane	PH	FAC	Apocynaceae	R
<i>Arctostaphylos glandulosa</i> Eastw. X <i>A. glauca</i> Lindley	Eastwood-Bigberry Manzanita Hybrid	S	.	Ericaceae	R
<i>Arctostaphylos glauca</i> Lindley	Bigberry Manzanita	S	.	Ericaceae	C
<i>Arctostaphylos parryana</i> Lemmon ssp. <i>parryana</i>	Parry Manzanita	S	.	Ericaceae	C
<i>Argemone munita</i> Durand & Hilgard ssp. <i>munita</i>	Prickly Poppy, Chicalote	AH	.	Papaveraceae	S
<i>Artemisia douglasiana</i> Besser	Mugwort	PH	FAC	Asteraceae	C
<i>Artemisia dracunculus</i> L.	Tarragon, Dragon Tarragon	PH	(FACW)	Asteraceae	C
<i>Artemisia tridentata</i> Nuttall ssp. <i>tridentata</i>	Great Basin Sagebrush	S	.	Asteraceae	C
<i>Asclepias californica</i> E. Greene ssp. <i>californica</i>	California Milkweed	AH	.	Apocynaceae	C
<i>Asclepias eriocarpa</i> Bentham	Kotolo, Indian Milkweed	PH	.	Apocynaceae	C
<i>Astragalus douglasii</i> (T. & G.) Gray var. <i>douglasii</i>	Douglas Milkvetch	PH	.	Fabaceae	S
<i>Astragalus lentiginosus</i> var. <i>idriensis</i> M.E. Jones	Idria Freckled Locoweed	PH	UPL	Fabaceae	O

This checklist may be reproduced for educational or scientific purposes only, with full credit given to the author.

Vascular Plants of the Upper Sespe Creek Bioregion, Ventura County, California
By David L. Magney

Scientific Name	Common Name	Habit	Wetland Indicator		Abundance Status
			Status	Family	
<i>Atriplex canescens</i> (Pursh) Nuttall var. <i>canescens</i>	Fourwing or Hoary Saltbush	S	(FACU)	Chenopodiaceae	O
<i>Atriplex polycarpa</i> (Torrey) S. Watson	Common Saltbush, Allscale	S	FACU	Chenopodiaceae	U
* <i>Avena barbata</i> Link. *	Slender Wild Oat	AG	.	Poaceae	C
<i>Baccharis salicifolia</i> (Ruiz Lopez & Pavon) Pers. ssp. <i>salicifolia</i>	Mulefat, Seep-willow, Water-wally	S	FAC	Asteraceae	C
<i>Balsamorhiza deltoidea</i> Nuttall	Balsamroot, Chuchupate	PH	.	Asteraceae	C
<i>Boechnera arcuata</i> (Nutt.) Windham & Al-Shehbaz	Few-flowered Rock Cress	PH	.	Brassicaceae	C
<i>Boechnera californica</i> (Rollins) Windham & Al-Shehbaz	California Rockcress	PH	.	Brassicaceae	U
<i>Boechnera pulchra</i> (M.E. Jones ex S. Watson) W.A. Weber	Desert Rock Cress	PH	.	Brassicaceae	C
<i>Boechnera sparsiflora</i> (Nutt.) Dorn	Few-flowered Rock Cress	PH	.	Brassicaceae	C
<i>Brickellia californica</i> (T. & G.) Gray	California Brickellbush	S	FACU	Asteraceae	C
* <i>Bromus arenarius</i> Labill. *	Australian Brome	AG	FACU	Poaceae	R
* <i>Bromus diandrus</i> Roth. ssp. <i>diandrus</i> *	Ripgut Grass	AG	(FACU)	Poaceae	C
* <i>Bromus hordeaceus</i> L. ssp. <i>hordeaceus</i> *	Soft Chess	AG	FACU	Poaceae	C
<i>Bromus pseudolaevipes</i> Wagon	Woodland Brome	PG	.	Poaceae	U
* <i>Bromus rubens</i> L. *	Red Brome	AG	UPL	Poaceae	C
<i>Bromus sitchensis</i> var. <i>carinatus</i> (Hook. & Arn.) R.E. Brainerd & Otting	California Brome	PG	.	Poaceae	C
* <i>Bromus tectorum</i> L. *	Downy Brome, Cheat Grass	AG	.	Poaceae	C
<i>Calochortus luteus</i> Lindley	Gold Nuggets	PG	.	Liliaceae	R
<i>Calochortus palmeri</i> S. Watson var. <i>palmeri</i>	Palmer Mariposa Lily	PG	FACW	Liliaceae	U, 1B.2
<i>Calochortus venustus</i> Benth.	Butterfly Mariposa Lily	PG	.	Liliaceae	C
<i>Calyptidium monandrum</i> Nuttall	Common Calyptidium, Sand Cress	AH	.	Montiaceae	C
<i>Calystegia malacophylla</i> ssp. <i>pedicellata</i> (Jepson) Munz	Sierra Morning-glory	PV	.	Convolvulaceae	C
<i>Camissonia campestris</i> (E. Greene) Raven cf. ssp. <i>campestris</i>	Mojave Sun-cup	AH	.	Onagraceae	O
<i>Camissonia contorta</i> (Douglas) P.H. Raven	Contorted Primrose	AH	.	Onagraceae	R
<i>Camissonia strigulosa</i> (Fischer & C. Meyer) Raven	Strigose Primrose	AH	.	Onagraceae	O
<i>Camissoniopsis hirtella</i> (E. Greene) W.L. Wagner & Hoch	Small-haired Primrose	AH	.	Onagraceae	O
<i>Camissoniopsis intermedia</i> (P.H. Raven) W.L. Wagner & Hoch	Intermediate Sun Cups	AH	.	Onagraceae	C
<i>Camissoniopsis micrantha</i> (Sprengel) W.L. Wagner & Hoch	Tiny Primrose	AH	.	Onagraceae	S
<i>Camissoniopsis pallida</i> (Abrams) W.L. Wagner & Hoch ssp. <i>pallida</i>	Pale Primrose	AH	.	Onagraceae	R
<i>Cardamine pachystigma</i> (S. Watson) Rollins var. <i>pachystigma</i>	Toothwort	PH	FAC	Brassicaceae	R
<i>Carex senta</i> Boott	Rough Sedge	PG	OBL	Cyperaceae	O
<i>Castilleja applegatei</i> ssp. <i>martinii</i> (Abrams) Chuang & Heckard	Martin Indian Paintbrush	PH	.	Orobanchaceae	C
<i>Castilleja foliolosa</i> Hook. & Arn.	Woolly Indian Paintbrush	PH	.	Orobanchaceae	O
<i>Castilleja linariifolia</i> Benth.	Linaria-leaved Indian Paintbrush	PH	.	Orobanchaceae	S
<i>Castilleja minor</i> ssp. <i>spiralis</i> (Jeps.) Chuang & Heckard	Large-flowered Annual Indian Paintbrush	AH	OBL	Orobanchaceae	S
<i>Castilleja subinclusa</i> E. Greene ssp. <i>subinclusa</i>	Long-leaved or Jepson Indian Paintbrush	PH	.	Orobanchaceae	C
<i>Ceanothus crassifolius</i> Torrey var. <i>crassifolius</i>	Snowball, Hoaryleaf Ceanothus	S	.	Rhamnaceae	C
<i>Ceanothus crassifolius</i> var. <i>planus</i> Abrams	Flatleaf Snowball	S	.	Rhamnaceae	C
<i>Ceanothus cuneatus</i> (Hooker) Nuttall ex Torr. & Gray var. <i>cuneatus</i>	Buck Brush, Wedgeleaf Ceanothus	S	.	Rhamnaceae	C
<i>Ceanothus leucodermis</i> E. Greene	Chaparral Whitethorn	S	.	Rhamnaceae	C
<i>Ceanothus palmeri</i> Trel.	Palmer Ceanothus	S	.	Rhamnaceae	O
* <i>Centaurea benedicta</i> (L.) L. * [<i>Cnicus benedictus</i> L.]	Blessed Thistle	AH	.	Asteraceae	S
* <i>Centaurea melitensis</i> L. *	Tocalote, Napa Thistle	AH	.	Asteraceae	C
* <i>Centaurea solstitialis</i> L. *	Yellow Star-thistle	AH	.	Asteraceae	C
<i>Centrostephia thurberi</i> Gray ex Benth. var. <i>thurberi</i>	Thurber Spineflower	AH	.	Polygonaceae	S

This checklist may be reproduced for educational or scientific purposes only, with full credit given to the author.

Vascular Plants of the Upper Sespe Creek Bioregion, Ventura County, California
By David L. Magney

Scientific Name	Common Name	Habit	Wetland Indicator		Abundance Status
			Status	Family	
<i>Cercocarpus betuloides</i> Torrey & A. Gray var. <i>betuloides</i>	Birchleaf Mountain Mahogany	S	.	Rosaceae	C
<i>Chaenactis glabriuscula</i> DC. var. <i>glabriuscula</i>	Common Yellow Pincushion	AH	.	Asteraceae	C
<i>Chaenactis glabriuscula</i> var. <i>heterocarpha</i> (A. Gray) H.M. Hall	Different-seeded Yellow Pincushion	AH	.	Asteraceae	R
<i>Chaenactis santolinoides</i> E. Greene	Perennial Pincushion	PH	.	Asteraceae	C
<i>Chamaesyce albomarginata</i> (Torrey & A. Gray) Small	Rattlesnake Spurge	AH	.	Euphorbiaceae	O
* <i>Chenopodium album</i> L. *	Lamb's Quarters, Pigweed, White Goosefoot	AH	FACU	Chenopodiaceae	C
<i>Chenopodium californicum</i> (S. Watson) S. Watson	California Goosefoot, Soap Plant	PH	.	Chenopodiaceae	C
<i>Chorizanthe uniaristata</i> T. & G.	One-awned Spineflower	AH	.	Polygonaceae	U
<i>Chorizanthe xanti</i> S. Watson var. <i>xanti</i>	Xantus Spineflower	AH	.	Polygonaceae	S
* <i>Cichorium intybus</i> L. *	Chicory	PH	.	Asteraceae	S
<i>Cirsium occidentale</i> (Nuttall) Jepson var. <i>occidentale</i>	Cobweb Thistle	BH	.	Asteraceae	O
<i>Cirsium occidentale</i> var. <i>californicum</i> (Gray) Keil & C. Turner	California Thistle	BH	.	Asteraceae	C
* <i>Cirsium vulgare</i> (Savi) Tenore *	Common or Bull Thistle	BH	FACU	Asteraceae	S
<i>Clarkia bottae</i> (Spach) Lewis & Lewis	Punchbowl Godetia	AH	.	Onagraceae	C
<i>Clarkia heterandra</i> (Torrey) H. Lewis & Raven	California Gaura	AH	.	Onagraceae	U
<i>Clarkia rhomboidea</i> Douglas	Rhomboid Clarkia	AH	.	Onagraceae	U
<i>Claytonia exigua</i> T. & G. ssp. <i>exigua</i>	Small Miner's Lettuce	AH	.	Montiaceae	S
<i>Claytonia parviflora</i> Hook. ssp. <i>parviflora</i>	Small-flowered Miner's Lettuce	AH	FACU	Montiaceae	O
<i>Claytonia perfoliata</i> Donn ex Willd. ssp. <i>perfoliata</i>	Miner's Lettuce	AH	FAC	Montiaceae	C
<i>Clematis ligusticifolia</i> Nuttall	Virgin's Bower, Old Man's Beard	PV	FAC	Ranunculaceae	C
<i>Collinsia callosa</i> Parish	Large-fruited Blue-eyed Mary	AH	.	Plantaginaceae	S
<i>Collinsia childii</i> A. Gray	Child Blue-eyed Mary	AH	.	Plantaginaceae	U
<i>Collomia grandiflora</i> Lindley	Large-flowered Collomia	AH	.	Polemoniaceae	S
<i>Cordylanthus rigidus</i> (Benth.) Jepson ssp. <i>rigidus</i>	Rigid Bird's Beak	AH	.	Orobanchaceae	C
<i>Corethrogyne filaginifolia</i> (Hook. & Arn.) Nutt. var. <i>filaginifolia</i>	California Cudweed-aster	PH	.	Asteraceae	C
<i>Cryptantha affinis</i> (A. Gray) E. Greene	Side-groved Forget-Me-Not	AH	.	Boraginaceae	R
<i>Cryptantha clevelandii</i> E. Greene var. <i>clevelandii</i>	Cleveland Forget-Me-Not	AH	.	Boraginaceae	C
<i>Cryptantha corollata</i> (I.M. Johnston) I.M. Johnston	Crowned Forget-Me-Not	AH	.	Boraginaceae	C, T
<i>Cryptantha decipiens</i> (M.E. Jones) A.A.Heller	Gravel Forget-Me-Not	AH	.	Boraginaceae	O
<i>Cryptantha echinella</i> E. Greene	Prickly Forget-Me-Not	AH	.	Boraginaceae	S
<i>Cryptantha intermedia</i> (A. Gray) E. Greene var. <i>intermedia</i>	Common Forget-Me-Not	AH	.	Boraginaceae	C
<i>Cryptantha leiocarpa</i> (Fischer & C. Meyer) E. Greene	Coast Forget-Me-Not	AH	.	Boraginaceae	R
<i>Cryptantha maritima</i> (Greene) Greene	Seaside Forget-Me-Not	AH	.	Boraginaceae	S
<i>Cryptantha microstachys</i> (A. Gray) E. Greene	Tejon Forget-Me-Not	AH	.	Boraginaceae	S
<i>Cryptantha muricata</i> var. <i>jonesii</i> (A. Gray) I.M. Johnston	Jones Prickly Forget-Me-Not	AH	.	Boraginaceae	S
<i>Cryptantha muricata</i> (Hooker & Arnott) Nelson & Macbr. var. <i>muricata</i>	Showy Prickly Forget-Me-Not	AH	.	Boraginaceae	C
<i>Cryptantha nemaclada</i> E. Greene	Colusa Forget-Me-Not	AH	.	Boraginaceae	S
<i>Cryptantha nevadensis</i> A. Nelson & Kennedy var. <i>nevadensis</i>	Nevada Forget-Me-Not	AH	.	Boraginaceae	S
<i>Cryptantha simulans</i> E. Greene	Pine Forget-Me-Not	AH	.	Boraginaceae	S
<i>Cryptantha torreyana</i> (A. Gray) E. Greene var. <i>torreyana</i>	Torrey Forget-Me-Knot	AH	.	Boraginaceae	U
<i>Cuscuta californica</i> Hooker & Arnott var. <i>californica</i>	California Dodder	AV	.	Convolvulaceae	C
<i>Cuscuta subinclusa</i> Durand & Hilg.	Canyon Dodder	AV	.	Convolvulaceae	O
<i>Datisca glomerata</i> (C. Presl) Baillon	Durango Root	PH	FACW	Datisceae	C
<i>Delphinium gracilentum</i> Greene	Coast Larkspur	PH	.	Ranunculaceae	R
<i>Delphinium parishii</i> ssp. <i>pallidum</i> (Munz) M.J. Warnock	Pale-flowered Larkspur	PH	.	Ranunculaceae	C, T

This checklist may be reproduced for educational or scientific purposes only, with full credit given to the author.

Vascular Plants of the Upper Sespe Creek Bioregion, Ventura County, California
By David L. Magney

Scientific Name	Common Name	Habit	Wetland Indicator		Abundance Status
			Status	Family	
<i>Delphinium parishii</i> A. Gray ssp. <i>parishii</i>	Parish's Larkspur	PH	.	Ranunculaceae	S
<i>Delphinium parryi</i> A. Gary ssp. <i>parryi</i>	Parry Larkspur	PH	.	Ranunculaceae	C
<i>Delphinium parryi</i> ssp. <i>purpureum</i> (F. Lewis & Epling) M.J. Warnock	Mount Pinos Larkspur	PH	.	Ranunculaceae	C, 4,3
<i>Dendromecon rigida</i> Bentham ssp. <i>rigida</i>	Bush Poppy	S	.	Papaveraceae	C
<i>Deschampsia danthanooides</i> (Trin.) Munro ex Bentham	Annual Hairgrass	AG	FACW	Poaceae	U
<i>Descurainia pinnata</i> ssp. <i>halictorum</i> (Cockerell) Detl.	Western Tansy Mustard	AH	.	Brassicaceae	R
<i>Descurainia pinnata</i> ssp. <i>menziesii</i> (DC.) Detl.	Menzies Tansy Mustard	AH	.	Brassicaceae	S
* <i>Descurainia sophia</i> (L.) Webb *	Tansy Mustard	AH	.	Brassicaceae	S
<i>Diplacus bigelovii</i> (Gray) Nesom var. <i>bigelovii</i>	Bigelow Monkeyflower	AH	.	Phrymaceae	S
<i>Diplacus bolanderi</i> (A. Gray) Nesom	Bolander Monkeyflower	AH	.	Phrymaceae	R
<i>Diplacus brevipes</i> (Bentham) Nesom	Short or Wide-throat Monkeyflower	AH	.	Phrymaceae	C
<i>Diplacus constrictus</i> (A.L. Grant) Nesom	Narrow-throated Monkeyflower	AH	.	Phrymaceae	O
<i>Diplacus constrictus</i> (A.L. Grant) Nesom X <i>Diplacus johnstonii</i> (A.L. Grant) Nesom	Hybrid Narrow-throated Monkeyflower	AH	.	Phrymaceae	U
<i>Diplacus johnstonii</i> (A.L. Grant) Nesom	Johnston Monkeyflower	AH	.	Phrymaceae	S
<i>Diplacus longiflorus</i> (Nuttall) A. Grant	Sticky Bush Monkeyflower	S	FACU	Phrymaceae	C
<i>Dipterostemon capitatus</i> (Bentham) Rydb. ssp. <i>capitatus</i>	Blue Dicks	PG	FACU	Themidaceae	C
<i>Drymocallis glandulosa</i> var. <i>viscida</i> (Parish) Ertert	Sticky Cinqufoil	PH	FAC	Rosaceae	R
<i>Dudleya cymosa</i> ssp. <i>pumila</i> (Rose) K. Nakai	Santa Monica Mtns. Live-forever	PH	.	Crassulaceae	U
<i>Dudleya lanceolata</i> (Nuttall) Britton & Rose	Lanceleaf Live-forever, Rock Lettuce	PH	.	Crassulaceae	C
<i>Ehrendorferia chrysantha</i> (Hooker & Arnott) Rylander	Golden Eardrops	PH	.	Fumariaceae	C
<i>Eleocharis acicularis</i> (L.) Roemer & Schultes var. <i>acicularis</i>	Slender Spikerush	PG	OBL	Cyperaceae	S
<i>Eleocharis macrostachya</i> Britt.	Common Spikerush	PG	OBL	Cyperaceae	C
* <i>Elymus caput-medusae</i> L.*	Medusa Head	PG	.	Poaceae	R
<i>Elymus condensatus</i> J. Presl	Giant Wildrye	PG	FACU	Poaceae	C
<i>Elymus elymoides</i> (Raf.) Swezey ssp. <i>elymoides</i>	Bottlebrush Squirreltail	PG	FACU	Poaceae	C
<i>Elymus glaucus</i> Buckl. ssp. <i>glaucus</i>	Blue or Woodland Wildrye	PG	FACU	Poaceae	C
<i>Elymus multisetus</i> (J.G. Smith) Burt Davy	Bottlebrush Squirreltail	PG	.	Poaceae	S
<i>Elymus triticoides</i> Buckl. ssp. <i>triticoides</i>	Creeping Wildrye	PG	FAC	Poaceae	C
<i>Elymus Xhanseni</i> Scribn.	Hansen's Wildrye	PG	(FACU)	Poaceae	R
<i>Emmenanthe penduliflora</i> Bentham var. <i>penduliflora</i>	Whispering Bells	AH	.	Hydrophyllaceae	C
<i>Ephedra viridis</i> Coville	Green Ephedra or Mormon-tea	S	.	Ephedraceae	C
<i>Epilobium canum</i> (Greene) Raven ssp. <i>canum</i>	California Fuchsia	PH	.	Onagraceae	C
<i>Equisetum arvense</i> L.	Common or Field Horsetail	PF	FAC	Equisetaceae	U
<i>Equisetum telmateia</i> ssp. <i>braunii</i> (Milde) R.L. Hauke	Giant Horsetail	PF	FACW	Equisetaceae	U
<i>Eremothera boothii</i> ssp. <i>decorticans</i> (Hooker & Arnott) W.L. Wagner & Hoch	Booth Shreading Primrose	AH	.	Onagraceae	C
<i>Eriastrum densifolium</i> ssp. <i>austromontanum</i> (Craig) H. Mason	Mountain Woolly Star	PH	.	Polemoniaceae	O
<i>Eriastrum densifolium</i> ssp. <i>elongatum</i> (Benth.) H. Mason	Elongate Woolly Star	PH	.	Polemoniaceae	O
<i>Eriastrum signatum</i> D. Gowen	Moroon-spotted Woolly Star	AH	.	Polemoniaceae	C
<i>Ericameria cuneata</i> (Gray) McClatchie var. <i>cuneata</i>	Wedgeleaf Goldenbush	S	.	Asteraceae	S
<i>Ericameria linearifolia</i> (DC.) Urb. & Wussow	Interior Goldenbush, Stenotopsis	S	.	Asteraceae	C
<i>Ericameria nauseosa</i> var. <i>bernardina</i> (H.M. Hall) G.L. Nesom & G.I. Baird	San Bernardino Rubber Rabbitbrush	S	.	Asteraceae	S
<i>Ericameria nauseosa</i> var. <i>mohavensis</i> (Greene) G.L. Nesom & G.I. Baird	Mojave Rubber Rabbitbrush	S	.	Asteraceae	C
<i>Ericameria nauseosa</i> var. <i>oreophila</i> (A. Nelson) G.L. Nesom & G.I. Baird	Common Rubber Rabbitbrush	S	.	Asteraceae	S
<i>Erigeron foliosus</i> Nuttall var. <i>foliosus</i>	Leafy Fleabane or Daisy	PH	.	Asteraceae	C
<i>Eriodictyon crassifolium</i> Bentham var. <i>crassifolium</i>	Thickleaf Yerba Santa	S	.	Namaceae	C

This checklist may be reproduced for educational or scientific purposes only, with full credit given to the author.

Vascular Plants of the Upper Sespe Creek Bioregion, Ventura County, California
By David L. Magney

Scientific Name	Common Name	Habit	Wetland Indicator		Abundance Status
			Status	Family	
<i>Eriodictyon crassifolium</i> var. <i>nigrescens</i> Brand	Thickleaf Yerba Santa	S	.	Namaceae	C
<i>Eriogonum baileyi</i> S. Watson var. <i>baileyi</i>	Bailey Buckwheat	AH	.	Polygonaceae	O
<i>Eriogonum cithariforme</i> S. Watson var. <i>cithariforme</i>	Cithara Buckwheat	AH	.	Polygonaceae	C
<i>Eriogonum covilleum</i> Eastw.	Coville Buckwheat	AH	.	Polygonaceae	U
<i>Eriogonum davidsonii</i> E. Greene	Davidson Buckwheat	AH	.	Polygonaceae	S
<i>Eriogonum fasciculatum</i> var. <i>polifolium</i> (A. DC.) Torrey & A. Gray	Hoary California Buckwheat	S	.	Polygonaceae	C
<i>Eriogonum gracile</i> Benth. var. <i>gracile</i>	Slender Woolly Buckwheat	AH	.	Polygonaceae	O
<i>Eriogonum heermanni</i> Durand & Hilg. var. <i>heermanni</i>	Heerman Buckwheat	S	.	Polygonaceae	S
<i>Eriogonum inerme</i> (S. Watson) Jeps. var. <i>inerme</i>	Unarmed Buckwheat	AH	.	Polygonaceae	U
<i>Eriogonum maculatum</i> A.A. Heller	Buckwheat	AH	.	Polygonaceae	S
<i>Eriogonum molestum</i> Greene	Pine Buckwheat	AH	.	Polygonaceae	U
<i>Eriogonum saxatile</i> S. Watson	Rock Buckwheat	AH	.	Polygonaceae	S
<i>Eriophyllum confertiflorum</i> (DC.) A. Gray var. <i>confertiflorum</i>	Golden Yarrow	PH	.	Asteraceae	C
<i>Eriophyllum pringlei</i> A. Gray	Pringle Golden Yarrow	AH	.	Asteraceae	O
* <i>Erodium cicutarium</i> (L.) L'Her. *	Redstem Filaree	AH	.	Geraniaceae	C
<i>Erysimum capitatum</i> (Dougl.) E. Greene var. <i>capitatum</i>	Western Wallflower	AH/BH	.	Brassicaceae	C
<i>Erythranthe cardinalis</i> (Douglas ex Benth.) Spach	Scarlet Monkeyflower	PH	FACW	Phrymaceae	C
<i>Erythranthe guttata</i> (Fischer ex DC.) Nesom [<i>Mimulus guttatus</i> DC.]	Common Streamside Monkeyflower	A/PH	OBL	Phrymaceae	C
<i>Eschscholzia caespitosa</i> Benth. ssp. <i>caespitosa</i>	Tufted Poppy	BH	.	Papaveraceae	C
<i>Eschscholzia californica</i> Chamisso in C.G.D. ssp. <i>californica</i>	California Poppy	AH	.	Papaveraceae	C
<i>Eulobus californicus</i> Torrey & A. Gray	Mustard Primrose	AH	.	Onagraceae	C
<i>Euphorbia spathulata</i> Lam.	Warty or Spoonleaf Spurge	AH	FAC	Euphorbiaceae	U
<i>Euthamia occidentalis</i> Nuttall	Western Goldenrod	PH	FACW	Asteraceae	O
<i>Frangula californica</i> (Eschsch.) A. Gray ssp. <i>californica</i>	California Coffeeberry	S	.	Rhamnaceae	O
<i>Frangula californica</i> ssp. <i>cuspidata</i> (Greene) Kartesz & Gandhi	Cuspid California Coffeeberry	S	.	Rhamnaceae	R
<i>Frangula californica</i> ssp. <i>tomentella</i> (Benth.) Kartesz & Gandhi	Hoary Coffeeberry	S	.	Rhamnaceae	C
<i>Fraxinus dipetala</i> Hooker & Arnott	California Flowering Ash	T	.	Oleaceae	C
<i>Fremontodendron californicum</i> (Torrey) Coville ssp. <i>californicum</i>	California Flannel Bush	S	.	Malvaceae	C
<i>Galium andrewsii</i> A. Gray ssp. <i>andrewsii</i>	Pine Mat, Phlox-leaved Bedstraw	PH	.	Rubiaceae	C
<i>Galium andrewsii</i> ssp. <i>intermedium</i> Dempster & Stebb.	Intermediate Pine Mat, Phlox-leaved Bedstraw	PH	.	Rubiaceae	C
<i>Galium angustifolium</i> Nuttall ssp. <i>angustifolium</i>	Chaparral or Narrow-leaved Bedstraw	S	.	Rubiaceae	C
<i>Galium aparine</i> L.	Goose Grass, Catchseed Bedstraw, Cleavers	AH	FACU	Rubiaceae	C
<i>Galium californicum</i> ssp. <i>flaccidum</i> (E. Greene) Dempster & Stebb.	California Bedstraw	PH	.	Rubiaceae	R
<i>Galium hallii</i> Munz & I.M. Johnston	Nodding Bedstraw	PH	.	Rubiaceae	C
<i>Garrya flavescens</i> S. Watson ssp. <i>flavescens</i>	Silk-tassel Bush	S	.	Garryaceae	O
<i>Garrya flavescens</i> ssp. <i>pallida</i> (Eastwood) Dahling	Pallid Silk-tassel Bush	S	.	Garryaceae	S
<i>Gayophytum diffusum</i> ssp. <i>parviflorum</i> H. Lewis & J. Szweykowski	Diffuse Gayophytum	AH	.	Onagraceae	O
<i>Gilia achilleifolia</i> ssp. <i>multicaulis</i> (Benth.) V. & A. Grant	Many-stemmed California Gilia	AH	.	Polemoniaceae	U
<i>Gilia capitata</i> ssp. <i>abrotanifolia</i> (E. Greene) V. Grant	Blue Field Gilia	AH	.	Polemoniaceae	C
<i>Gilia ochroleuca</i> ssp. <i>bizonata</i> A. & V. Grant	Desert Gilia	AH	.	Polemoniaceae	O
<i>Gilia ochroleuca</i> ssp. <i>exilis</i> (Gray) A. & V. Grant	Volcanic Gilia	AH	.	Polemoniaceae	R
<i>Gilia ochroleuca</i> ssp. <i>lanosa</i> Hrusa	Woollystem Volcanic Gilia	AH	.	Polemoniaceae	S, 4,3
<i>Glycyrrhiza lepidota</i> (Nutt.) Pursh	American Licorice	PH	FAC	Fabaceae	S
<i>Gnaphalium palustre</i> Nuttall	Lowland Cudweed	AH	FACW	Asteraceae	O
<i>Greenocharis circumsissa</i> (Hook. & Arn.) Ryd. var. <i>circumsissa</i> [<i>Cryptantha c.</i> var. <i>c.</i>]	Greenocharis	AH	.	Boraginaceae	C

This checklist may be reproduced for educational or scientific purposes only, with full credit given to the author.

Vascular Plants of the Upper Sespe Creek Bioregion, Ventura County, California
By David L. Magney

Scientific Name	Common Name	Habit	Wetland Indicator		Abundance Status
			Status	Family	
<i>Gutierrezia californica</i> (DC.) Torrey & A. Gray	California Matchweed, Snakeweed	S	.	Asteraceae	O
<i>Helenium puberulum</i> DC.	Rosilla	A/PH	FACW	Asteraceae	S
<i>Hesperoyucca whipplei</i> ssp. <i>cespitosa</i> (M.E. Jones) A.L. Haines	Clumping Our Lord's Candle	S	.	Agavaceae	C
<i>Heterotheca sessiliflora</i> ssp. <i>camphorata</i> (Eastw.) Semple	Camphor False Goldenaster	PH	.	Asteraceae	R
* <i>Hirschfeldia incana</i> (L.) Lagr.-Fossat *	Summer Mustard	PH	(FACU)	Brassicaceae	C
<i>Hoita macrostachya</i> (DC.) Rydb.	Leather Root, California Tea	PH	OBL	Fabaceae	S
<i>Hoita orbicularis</i> (Lindley) Rydb.	Round-leaved Hoita	PH	OBL	Fabaceae	U
<i>Hordeum brachyantherum</i> ssp. <i>californicum</i> (Covas & Stebb.) v. Bothner et al.	California Barley	AG	FACW	Poaceae	O
<i>Hordeum intercedens</i> Nevski	Vernal Barley	AG	FAC	Poaceae	S
* <i>Hordeum vulgare</i> L. var. <i>vulgare</i> *	Common Barley	AG	.	Poaceae	S
<i>Iva axillaris</i> ssp. <i>robustior</i> (Hooker) Bassett	Poverty Weed, Small-flowered Sumpweed	PH	FAC	Asteraceae	C
<i>Juncus balticus</i> Willd. ssp. <i>balticus</i>	Baltic Rush	PG	FACW	Juncaceae	O
<i>Juncus bufonius</i> var. <i>occidentalis</i> F.J. Herm.	Western Toad Rush	AG	FACW	Juncaceae	R
<i>Juncus dubius</i> Englem.	Mariposa Rush	PG	FACW	Juncaceae	S
<i>Juncus mexicanus</i> Willd. ex Schultes & Schultes.f.	Mexican Rush, Wire Grass	PG	FACW	Juncaceae	C
<i>Juncus tenuis</i> Willd.	Poverty Rush	PG	OBL	Juncaceae	R
<i>Juncus xiphioides</i> E. Meyer	Iris-leaved Rush	PG	OBL	Juncaceae	C
<i>Juniperus californica</i> Carrière	California Juniper	S	.	Cupressaceae	C
<i>Keckiella breviflora</i> (Lindley) I.M. Johnston var. <i>breviflora</i>	Stubflower Penstemon, Gaping Beardtongue	S	.	Plantaginaceae	C
<i>Keckiella cordifolia</i> (Benth) I.M. Johnston	Heart-leaved Bush Penstemon	S	.	Plantaginaceae	C
<i>Keckiella ternata</i> var. <i>septentrionalis</i> (Munz & Johnston) N. Holmgren	Blue-stemmed Bush Penstemon	S	.	Plantaginaceae	C
<i>Koeleria macrantha</i> (Ledeb.) J.A. Schultes	Junegrass	PG	.	Poaceae	O
* <i>Lactuca serriola</i> L. *	Prickly Wild Lettuce	AH	FACU	Asteraceae	C
<i>Lagophylla ramosissima</i> Nutt. ssp. <i>ramosissima</i>	Branched Lagophylla, Common Hareleaf	AH	.	Asteraceae	C
<i>Lathyrus vestitus</i> ssp. <i>laetiflorus</i> (Greene) Broich	Pacific Peavine	PV	.	Fabaceae	O
<i>Lathyrus vestitus</i> Nuttall ssp. <i>vestitus</i>	Pacific Peavine	PV	.	Fabaceae	C
<i>Layia glandulosa</i> (Hook.) Hook. & Arn. ssp. <i>glandulosa</i>	White Layia	AH	.	Asteraceae	C
<i>Layia glandulosa</i> ssp. <i>lutea</i> Keck	Yellow Layia	AH	.	Asteraceae	U
<i>Layia heterotricha</i> (DC.) Hooker & Arnott	Pale-yellow Layia	AH	FAC	Asteraceae	S, 1B.1
<i>Layia platyglossa</i> (Fischer & C. Meyer) A. Gray	Tidy Tips	AH	.	Asteraceae	O
* <i>Lepidium appelianum</i> Al-Shehbaz [<i>Cardaria pubescens</i>] *	White-top	PH	UPL	Brassicaceae	S
<i>Lepidospartum squamatum</i> (A. Gray) A. Gray	Scalebroom	S	FACU	Asteraceae	C
<i>Leptosiphon parviflorus</i> Benth	Yellow Linanthus	AH	.	Polemoniaceae	C
<i>Leptosyne bigelovii</i> (A.Gray) A.Gray	Bigelow Coreopsis	AH	.	Asteraceae	C
<i>Linanthus dichotomus</i> Benth. ssp. <i>dichotomus</i>	Evening Snow	AH	.	Polemoniaceae	S
<i>Linum lewisii</i> Pursh	Western Blue Flax	PH	.	Linaceae	S
<i>Logfia filaginoides</i> (Hook. & Arn.) Morefield	California Filago	AH	.	Asteraceae	C
<i>Lomatium dasycarpum</i> (T. & G.) Coulter & Rose ssp. <i>dasycarpum</i>	Hairy Wing-fruit	PH	.	Apiaceae	C
<i>Lomatium multifidum</i> (Nutt.) R.P. McNeill & Darrach	Carrotleaf Biscuitroot	PH	.	Apiaceae	U
<i>Lomatium utriculatum</i> (T. & G.) Coulter & Rose	Foothill Lomatium	PH	.	Apiaceae	O
<i>Lonicera subspicata</i> Hooker & Arnott var. <i>subspicata</i>	Santa Ynez Mountains Honeysuckle	S	.	Caprifoliaceae	R
<i>Lonicera subspicata</i> var. <i>denudata</i> Rehder	Southern or San Diego Honeysuckle	S	.	Caprifoliaceae	C
<i>Lupinus albifrons</i> var. <i>austromontanus</i> (A.A. Heller) Jeps.	Southern Mountain Bush Lupine	S	.	Fabaceae	O
<i>Lupinus albifrons</i> var. <i>hallii</i> (Abrams) Jeps.	Hall Bush Lupine	S	.	Fabaceae	C
<i>Lupinus bicolor</i> Lindley	Bicolored or Miniature Lupine	AH	.	Fabaceae	C

This checklist may be reproduced for educational or scientific purposes only, with full credit given to the author.

Vascular Plants of the Upper Sespe Creek Bioregion, Ventura County, California
By David L. Magney

Scientific Name	Common Name	Habit	Wetland Indicator		Abundance Status
			Status	Family	
<i>Lupinus concinnus</i> J. Agardh spp. <i>concinnus</i>	Bajada Lupine	AH	.	Fabaceae	C
<i>Lupinus concinnus</i> spp. <i>optatus</i> D. Dunn	Bajada Lupine	AH	.	Fabaceae	R
<i>Lupinus concinnus</i> spp. <i>orcutti</i> (S. Watson) D. Dunn	Orcutt Bajada Lupine	AH	.	Fabaceae	R
<i>Lupinus formosus</i> Greene var. <i>formosus</i>	Summer Bush Lupine	PH	.	Fabaceae	C
<i>Lupinus formosus</i> var. <i>robustus</i> C.P. Smith	Summer Bush Lupine	PH	.	Fabaceae	U
<i>Lupinus hirsutissimus</i> Bentham	Nettle or Stinging Lupine	AH	.	Fabaceae	C
<i>Lupinus luteolus</i> Kellogg	Butter Lupine	AH	.	Fabaceae	U
<i>Lupinus microcarpus</i> Sims var. <i>microcarpus</i>	Red-flowered Lupine	AH	.	Fabaceae	C
<i>Lupinus microcarpus</i> var. <i>densiflorus</i> (Benth) Jeps.	Densely Red-flowered Lupine	AH	.	Fabaceae	S
<i>Lupinus microcarpus</i> var. <i>horizontalis</i> (A.A. Heller) Jeps.	Prostrate Red-flowered Lupine	AH	.	Fabaceae	O
<i>Lupinus sparsiflorus</i> Benth. ssp. <i>sparsiflorus</i>	Few-flowered or Loose-flowered Lupine	AH	.	Fabaceae	C
<i>Madia gracilis</i> (Smith) Keck	Slender Tarplant or Madia	AH	.	Asteraceae	C
<i>Malacothamnus davidsonii</i> (B.L. Rob.) Greene	Davidson's Bushmallow	S	.	Malvaceae	R
<i>Malacothrix clevelandii</i> Gray	Cleveland Cliff-aster	AH	.	Asteraceae	U
<i>Malacothrix floccifera</i> (DC.) Blake	Woolly or Flobose Dandelion	AH	.	Asteraceae	O
<i>Malacothrix glabrata</i> A. Gray	Desert Dandelion	AH	.	Asteraceae	R
<i>Malacothrix phaeocarpa</i> W.S. Davis	Brown-fruited Dandelion	AH	.	Asteraceae	R, 4.3
<i>Malacothrix saxatilis</i> var. <i>commutata</i> Ferris	Cliff-aster	PH	.	Asteraceae	S
<i>Malacothrix saxatilis</i> var. <i>tenuifolia</i> (Nutt.) Gray	Tenuated Cliff-aster	PH	.	Asteraceae	C
<i>Marah fabacea</i> (Naudin) Greene	California Man-root	PV	.	Cucurbitaceae	C
<i>Matricaria discoidea</i> DC.	Pineapple Weed, Rayless Chamomile	AH	FACU	Asteraceae	O
<i>Melica californica</i> Scribner var. <i>californica</i>	California Melic Grass	PG	.	Poaceae	U
<i>Melica imperfecta</i> Trin.	Coast Melic Grass	PG	.	Poaceae	C
* <i>Melilotus indicus</i> (L.) All. *	Sourclover, Yellow Sweetclover	AH	FACU	Fabaceae	C
<i>Mentzelia albicaulis</i> (Hook.) T. & G.	Whitestem Stickleaf	AH	.	Loasaceae	U
<i>Mentzelia gracilentia</i> T. & G.	Slender Stickleaf	AH	.	Loasaceae	U
<i>Mentzelia laevicaulis</i> (Hooker) Torrey & Gray	Blazing Star	AH	.	Loasaceae	O
<i>Mentzelia micrantha</i> (Hook. & Arnott) T. & G.	Tiny-flowered Stickleaf	AH	.	Loasaceae	C
<i>Mentzelia pectinata</i> Kellogg	Stickleaf	AH	.	Loasaceae	S
<i>Mentzelia veatchiana</i> Kellogg	Veatch Stickleaf	AH	.	Loasaceae	C
<i>Monardella breweri</i> Gray var. <i>breweri</i>	Brewer Coyote Mint	AH	.	Lamiaceae	O
<i>Monardella breweri</i> var. <i>lanceolata</i> (Gray) A.C. Sanders & Elvini	Mustang Mint	AH	.	Lamiaceae	C
<i>Muhlenbergia asperifolia</i> (Nees & Meyen) Parodi	Scratchgrass	PG	FACW	Poaceae	S
<i>Muhlenbergia rigens</i> (Benth.) Hitchc.	Deer Grass	PG	FAC	Poaceae	O
<i>Myriopteris</i> [<i>Cheilanthes</i>] <i>covillei</i> (Maxon) A. Löve & D. Löve	Coville Lip-fern	PF	.	Pteridaceae	C
<i>Nama californica</i> (Gray) J.D. Bacon	Lemmon California Waterleaf	AH	.	Namaceae	O
<i>Nemophila pedunculata</i> Benth.	Little-foot or Meadow Baby Blue-eyes	AH	FAC	Hydrophyllaceae	C
<i>Nicotiana attenuata</i> Torrey	Coyote Tobacco	AH	FACU	Solanaceae	O
<i>Oenothera californica</i> (S. Watson) S. Watson ssp. <i>californica</i>	California Evening-primrose	PH	.	Onagraceae	S
<i>Oenothera elata</i> ssp. <i>hookeri</i> (Torrey & A. Gray) W. Dietr.	Hooker Coast Evening-primrose	BH	FACW	Onagraceae	U
<i>Pectocarya heterocarpa</i> I.M. Johnston	Two-faced Pectocarya	AH	.	Boraginaceae	R
<i>Pectocarya setosa</i> Gray	Setose Pectocarya	AH	.	Boraginaceae	C
<i>Pediomelum californicum</i> (S. Watson) Rydb.	California Indian Breadroot	PH	.	Fabaceae	O
<i>Pellaea andromedifolia</i> (Haulfuss) Fee	Coffee Fern	PF	.	Pteridaceae	C
<i>Pellaea mucronata</i> (D.C. Eaton) D.C. Eaton in Emory var. <i>mucronata</i>	Birdsfoot Cliffbrake or Fern	PF	.	Pteridaceae	C

This checklist may be reproduced for educational or scientific purposes only, with full credit given to the author.

Vascular Plants of the Upper Sespe Creek Bioregion, Ventura County, California
By David L. Magney

Scientific Name	Common Name	Habit	Wetland Indicator		Abundance Status
			Status	Family	
<i>Penstemon centranthifolius</i> Bentham	Scarlet Bugler	PH	.	Plantaginaceae	C
<i>Penstemon heterophyllus</i> Lindley var. <i>heterophyllus</i>	Mountain Penstemon	PH	.	Plantaginaceae	C
<i>Pentagramma triangularis</i> (Kaulf.) Yatskievych, Windham, & E. Wollenweber ssp. <i>triangularis</i>	Goldenback Fern	PF	.	Pteridaceae	C
<i>Perideridia pringlei</i> (J.M. Coulter & Rose) A. Nelson & J.F. Macbr.	Adobe or Pringle Yampah	PH	.	Apiaceae	O, 4,3
<i>Peritoma arborea</i> var. <i>globosa</i> (Coville) H.H. Iltis	Bladderpod	S	.	Cleomaceae	S
<i>Phacelia brachyloba</i> (Benth.) Gray	Short-lobed Phacelia	AH	.	Hydrophyllaceae	C
<i>Phacelia cicutaria</i> var. <i>hispida</i> (A. Gray) J.T. Howell	Hispid Caterpillar Phacelia	AH	.	Hydrophyllaceae	C
<i>Phacelia ciliata</i> Benth. var. <i>ciliata</i>	Ciliate Phacelia	AH	.	Hydrophyllaceae	O
<i>Phacelia curvipes</i> S. Watson var. <i>curvipes</i>	Washoe Phacelia	AH	.	Hydrophyllaceae	O
<i>Phacelia davidsonii</i> Gray	Davidson Phacelia	AH	.	Hydrophyllaceae	C
<i>Phacelia douglasii</i> (Benth.) Torrey var. <i>douglasii</i>	Douglas Phacelia	AH	.	Hydrophyllaceae	O
<i>Phacelia egena</i> (Brand) J.T. Howell	Rock Phacelia	PH	.	Hydrophyllaceae	C
<i>Phacelia fremontii</i> Torrey	Fremont Phacelia	AH	.	Hydrophyllaceae	C
<i>Phacelia imbricata</i> Greene ssp. <i>imbricata</i>	Mountain Phacelia	PH	.	Hydrophyllaceae	C
<i>Phacelia imbricata</i> ssp. <i>patula</i> (Brand) Heckard	Mountain Phacelia	PH	.	Hydrophyllaceae	U
<i>Phacelia longipes</i> Gray	Long-stalked Phacelia	AH	.	Hydrophyllaceae	C
<i>Phacelia parryi</i> Torrey	Parry Phacelia	AH	.	Hydrophyllaceae	O
<i>Phacelia ramosissima</i> var. <i>latifolia</i> (Torrey) Cronq.	Branching Phacelia	PH	FACU	Hydrophyllaceae	S
<i>Phacelia rattanii</i> A. Gray	Brand Phacelia	AH	.	Hydrophyllaceae	R
<i>Phacelia tanacetifolia</i> Benth.	Tansy Phacelia	AH	.	Hydrophyllaceae	C
* <i>Phalaris minor</i> Retz *	Littleseed or Mediterranean Canarygrass	AG	.	Poaceae	O
<i>Phoradendron leucarpum</i> ssp. <i>macrophyllum</i> (Engelm.) J.R. Abbott & R.L. Thomps.	Bigleaf Mistletoe	PH	.	Viscaceae	C
<i>Pinus monophylla</i> Torrey & Frémont	Singleleaf Pinyon Pine	T	.	Pinaceae	C
<i>Poa secunda</i> J.S. Presl ssp. <i>secunda</i>	One-sided Bluegrass	PG	FACU	Poaceae	C
<i>Polemonium micranthum</i> Benth.	Tiny Phlox	AH	FACU	Polemoniaceae	U
<i>Polystichum imbricans</i> ssp. <i>curtum</i> (Ewan) D.H. Wagner	Imbricate Sword Fern	PF	.	Dryopteridaceae	U
<i>Prunus ilicifolia</i> (Nutt.) Walp. ssp. <i>ilicifolia</i>	Hollyleaf Cherry	S	.	Rosaceae	C
<i>Prunus virginiana</i> var. <i>demissa</i> (Nuttall) Torrey	Western Choke Cherry	S	FAC	Rosaceae	S
<i>Pseudognaphalium beneolens</i> (A. Davidson) Anderberg	Coastal Everlasting	B/PH	.	Asteraceae	O
<i>Pseudotsuga macrocarpa</i> (Vasey) Mayr	Bigcone Spruce or False Hemlock	T	.	Pinaceae	C
<i>Pterostegia drymarioides</i> Fischer & C. Meyer	Fairy Mist	AH	.	Polygonaceae	C
<i>Quercus berberidifolia</i> Leibm.	California Scrub Oak	S	.	Fagaceae	C
<i>Quercus chrysolepis</i> Liebm.	Canyon Live or Goldencup Oak	T	.	Fagaceae	C
<i>Quercus palmeri</i> Engelm.	Palmer Oak	T	.	Fagaceae	U
<i>Quercus Xalvordiana</i> Eastwood	Alvord Oak	S/T	.	Fagaceae	R
<i>Rafinesquia californica</i> Nutt.	California Chicory	AH	.	Asteraceae	C
<i>Rhamnus ilicifolia</i> Kellogg	Hollyleaf Redberry, Buckthorn	S	.	Rhamnaceae	C
<i>Rhus trilobata</i> var. <i>malacophylla</i> (E. Greene) Jepson	Woolly Skunkbrush	S	FACU	Anacardiaceae	S
<i>Rhus trilobata</i> var. <i>quinata</i> Jepson	Skunkbrush	S	FACU	Anacardiaceae	O
* <i>Robinia pseudoacacia</i> L. *	Black Locust	T	FACU	Fabaceae	U
<i>Romneya coulteri</i> Harvey	Coulter Matilija Poppy	S	.	Papaveraceae	U, 4,2
<i>Romneya trichocalyx</i> Eastwood	Hairy Matilija Poppy	S	.	Papaveraceae	C
<i>Rosa californica</i> Cham. & Schldl.	California Wild Rose	S	FAC	Rosaceae	C
<i>Sabulina douglasii</i> (Fenzl ex T. & G.) Dellenb. & Kabereit	Douglas Sandwort	AH	.	Caryophyllaceae	C
<i>Salix exigua</i> var. <i>hindsiana</i> (Bentham) Dorn	Hind's Willow	S	FACW	Salicaceae	C

This checklist may be reproduced for educational or scientific purposes only, with full credit given to the author.

Vascular Plants of the Upper Sespe Creek Bioregion, Ventura County, California
By David L. Magney

Scientific Name	Common Name	Habit	Wetland Indicator		Abundance Status
			Status	Family	
<i>Salix laevigata</i> Bebb.	Red Willow	T	FACW	Salicaceae	C
<i>Salix lasiandra</i> Benth. var. <i>lasiandra</i>	Shining [Yellow] Willow	T	FACW	Salicaceae	O
<i>Salix lasiolepis</i> Benth. var. <i>lasiolepis</i>	Arroyo Willow	T	FACW	Salicaceae	C
<i>Salvia apiana</i> Jepson var. <i>apiana</i>	White Sage	S	.	Lamiaceae	C
<i>Salvia columbariae</i> Benth.	Chia	AH	.	Lamiaceae	C
<i>Salvia mellifera</i> Greene	Black Sage	S	.	Lamiaceae	C
<i>Scutellaria siphocampyloides</i> Vatke	Skullcap	PH	FACU	Lamiaceae	S
<i>Selaginella bigelovii</i> Underwood	Bigelow Spike-moss	PF	.	Selaginellaceae	C
<i>Senecio flaccidus</i> var. <i>douglasii</i> (DC.) B.L.Turner & T.M.Barkley	Shrubby Butterweed	S	.	Asteraceae	C
* <i>Silene coniflora</i> Nees ex Oth *	Many-veined Campion	AH	.	Caryophyllaceae	S
* <i>Sisymbrium altissimum</i> L. *	Tumble Mustard	AH	FACU	Brassicaceae	O
<i>Solanum xanti</i> A. Gray var. <i>xanti</i>	Chaparral Nightshade	S	.	Solanaceae	C
* <i>Sonchus asper</i> (L.) Hill ssp. <i>asper</i> *	Prickly Sow-thistle	AH	FAC	Asteraceae	C
* <i>Spartium junceum</i> L. *	Spanish Broom	S	.	Fabaceae	O
<i>Stephanomeria cichoriacea</i> A. Gray	Chicory-leaved Milk-aster	PH	.	Asteraceae	O
<i>Stephanomeria virgata</i> Benth. ssp. <i>virgata</i>	Twiggy Wreath Plant	AH	.	Asteraceae	C
<i>Stephanomeria virgata</i> ssp. <i>pleurocarpa</i> (Greene) Gottlieb	Two-fruited Wreath Plant	AH	.	Asteraceae	S
<i>Stipa coronata</i> Thurber	Giant Needlegrass	PG	.	Poaceae	C
<i>Toxicodendron diversilobum</i> (T. & G.) Greene	Western Poison Oak	S/V	FACU	Anacardiaceae	C
<i>Trifolium albopurpureum</i> T. & G. [var. <i>albopurpureum</i>]	Rancheria Clover	AH	FACU	Fabaceae	S
<i>Trifolium gracilentum</i> T. & G. [var. <i>gracilentum</i>]	Pin-point Clover	AH	.	Fabaceae	O
<i>Trifolium variegatum</i> Nutt. var. <i>variegatum</i>	Whitetip Clover	AH	FAC	Fabaceae	S
<i>Trifolium willdenovii</i> Sprengel	Tomcat Clover	AH	FACW	Fabaceae	O
<i>Turricula parryi</i> (A. Gray) J.F. Macbr.	Poodle-dog Bush	S	.	Namaceae	C
<i>Typha domingensis</i> Pers.	Southern Cattail	PH	OBL	Typhaceae	C
<i>Umbellularia californica</i> (Hook. & Arn.) Nutt. var. <i>californica</i>	California Bay	T	FAC	Lauraceae	C
<i>Verbena lasiostachys</i> Link. var. <i>lasiostachys</i>	Western Verbena	AH	FAC	Verbenaceae	C
<i>Verbena lasiostachys</i> var. <i>scabrida</i> Mold.	Rough Western Verbena	AH	OBL	Verbenaceae	U
<i>Viola purpurea</i> Kellogg ssp. <i>purpurea</i>	Purple or Mountain Violet	PH	.	Violaceae	S
<i>Viola purpurea</i> ssp. <i>quercetorum</i> (M. Baker & J. Clausen) R.J. Little	Oak Violet	PH	.	Violaceae	S
* <i>Vulpia myuros</i> (L.) C. Gnelin forma <i>myuros</i> *	Rattail Fescue	AG	FACU	Poaceae	O

Notes: Scientific nomenclature follows the Flora of North America Editorial Committee (1993-), *The Jepson Manual* (Baldwin et al. 2012), Baker et al. (2012 for Phrymaceae), Nesom (2012a & 2012b for *Erythranthe*, 2013 for *Diplacus*), Tulig & Nesom (2012 for *Diplacus*), Hasenstab-Lehman & Simpson (2012 for *Cryptantha*), Burge & Zhukovsky (2013 for *Ceanothus vestitus* complex), Schneider (2016 for *Aphyllon*), Colwell et al. (2017 for *Aphyllon*), and Broich (1987 for *Lathyrus vestitus*). Most current taxonomy is followed when changed have occurred since publication of the above listed references. Common names follow Abrams and Ferris (1960), Neihaus and Ripper (1976), and DeGarmo (1980). An "*" indicates non-native taxa that have become naturalized or persist without cultivation.

Habit definitions:

AF = annual fern or fern ally.	PG = perennial grass or graminoid.
AG = annual grass or graminoid.	PH = perennial herb.
AH = annual herb.	PV = perennial vine.
BH = biennial herb.	S = shrub.
PF = perennial fern or fern ally.	T = tree.

Wetland indicator status (Lichvar et al. 2016): OBL = obligate wetland species, occurs almost always in wetlands (>99% probability)

This checklist may be reproduced for educational or scientific purposes only, with full credit given to the author.

Vascular Plants of the Upper Sespe Creek Bioregion, Ventura County, California

By David L. Magney

Scientific Name	Common Name	Habit	Wetland Indicator Status	Family	Abundance Status
<p>FACW = facultative wetland species, usually found in wetlands (67-99% probability). FAC = facultative species, equally likely to occur in wetlands or nonwetlands (34-67% probability). FACU = facultative upland species, usually occur in nonwetlands (67-99% probability). A period "." indicates that no wetland indicator status has been given in Lichvar et al. (2016). Parentheses around an indicator status indicates the wetland status as suggested by David L. Magney.</p>					
<p>Abundance status definitions for Ventura County: R = Rare (1-5 extant populations known) U = Uncommon (6-10 extant populations known) S = Scattered (11-20 extant populations known) O = Occasional (21-30 extant populations known) C = Common (>30 extant populations known) X = Expected but not yet found T = Type Locality</p>		<p>Listing status definitions: FE = Federally listed Endangered FT = Federally listed Threatened SE = California listed Endangered ST = California listed Threatened SR = California listed Rare FS = Forest Service Sensitive Species</p>		<p>CNPS Rarity Ranking definitions: 1A = CNPS 1A 1B.x = CNPS 1B 2.x = CNPS 2 3.x = CNPS 3 4.x = CNPS 4</p>	
<p>Developed by David L. Magney 2011, updated 2023 (version 2.5). Checklist may be used for educational and nonprofit purposes only. Based on voucher specimens at one or more California public herbaria and direct observations by author.</p>					

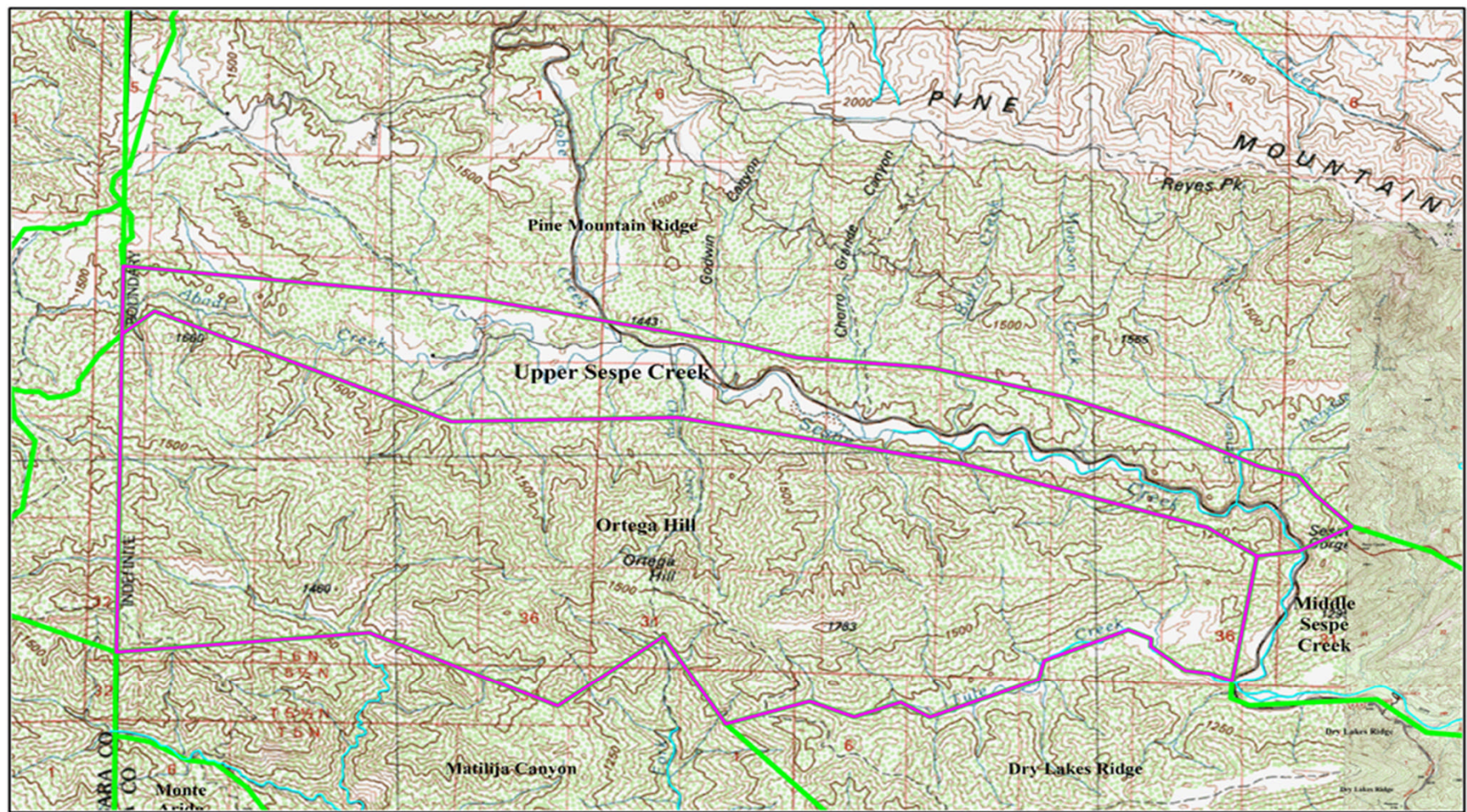
This checklist may be reproduced for educational or scientific purposes only, with full credit given to the author.

David L. Magney, P.O. Box 1539, Cedar Ridge, CA 95924. www.magney.org


Vascular Plants of the Upper Sespe Creek Bioregion, Ventura County, California

By David L. Magney

Scientific Name	Common Name	Habit	Wetland Indicator Status	Family	Abundance Status
-----------------	-------------	-------	--------------------------	--------	------------------



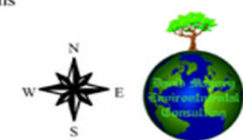
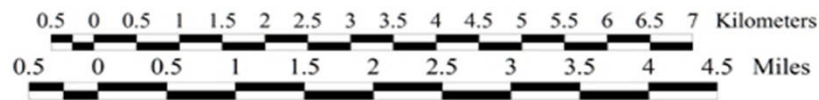
Upper Sespe Creek Floristic Bioregion

 Upper Sespe Creek Floristic Bioregion

 Ventura County Bioregions

 Streams

Map created 14 March 2023
 David Magney Environmental Consulting
 P.O. Box 1539, Cedar Ridge, CA 95924
 530/273-1799 - www.magney.org
 Projection: NAD 1983, CA State Plane, Zone V (feet)
 Base Map: Cuyama, Calif. USGS 100,000-minute Quadrangle



This checklist may be reproduced for educational or scientific purposes only, with full credit given to the author.

David L. Magney, P.O. Box 1539, Cedar Ridge, CA 95924. www.magney.org